



LEARN. APPLY. CREATE.

We at SRHU believe that there's no better mantra for success than this.

*A degree is a proof of education.
Persistent Learning is the passport to fly
to the great, unseen heights.*

CONTENT

Introducing SRHU

What Makes Us Unique!	3
Know the Founder, Promoting Society	5
Mission and Vision	6
Meet Our Chancellor, Vice Chancellor	7
Academic Foundation & Pillars	8
Collegiate Infrastructure	12
Collaborations, Recognitions and Affiliations	15

Academic Units

Himalayan School of Science & Technology	19
Himalayan School of Management Studies	31
Himalayan Institute of Medical Sciences	37
• Department of Paramedical Sciences	41
• Department of Bio Sciences	47
• Department of Yoga Science and Holistic Health	51
• Department of Hospital Administration	53
Himalayan College of Nursing	55
Himalayan School of Vocational Studies & Skill Development	61

Research	65
----------	----

Placements	67
------------	----

Admissions	68
------------	----

Fee Structure	71
---------------	----

Campus Life

Co-curricular & Extra-curricular Activities	95
Facilities & Amenities	97

Find Out More

Awards & Recognitions	99
Convocation	100
General Information	101



INTRODUCING
SRHU
What Makes Us Unique!



Student Life

In the foothills of Himalayas, a sprawling campus, over 200 acres, we provide lots of opportunities for extra-curricular and co-curricular activities, necessary, to become an all-rounder.



Holistic Approach to Education

Mentoring, Meditation & Science of Joyful Living workshops help students grow as complete individuals.



Community Outreach

Initiatives in health, education, water, sanitation & livelihood essentially in the hinterlands of Garhwal Himalayas which sensitize students towards underprivileged sections of society.



KNOW THE FOUNDER



“Your real education begins when you learn to explore and discover yourself”
- Swami Rama

Swami Rama established the Himalayan Institute of Yoga, Science and Philosophy of the U.S.A. in the early 1970s. He returned to India to establish the Himalayan Institute Hospital Trust (HIHT) at Jolly Grant, Dehradun. The Trust opened a multi-specialty hospital in 1994 and a medical college in 1995.

The visionary sage, who continues to be its guiding force, conceived and established Himalayan Institute Hospital Trust that has been providing education and healthcare for the last three decades.

Born in 1925 in Uttarakhand, H.H. Dr. Swami Rama, a great Yogi, Philosopher, Scientist and Humanitarian, was mentored and inspired by many adepts, including Mahatma Gandhi, Sri Aurobindo, and Rabindranath Tagore. He received his higher education at Bangalore, Prayagraj, Varanasi, and Oxford University, England.

He worked as a medical consultant in London and assisted in parapsychological research in Moscow. He then returned to India, where he established a clinic and ashram (Sadhana Mandir Trust) in Rishikesh. In 1960 he completed his degree at the medical college in Darbhanga. Later he went to Japan, where he established a major spiritual center. At the behest of his master, he went to the United States in 1969, to build a bridge between science and spirituality.

Swami Rama demonstrated, under controlled laboratory conditions, his exquisite control of involuntary physiological parameters. These experiments were reported in many leading scientific journals and set the stage for the recognition of the psychosomatic origins of a majority of diseases, the development of bio-feedback and holistic paradigms of health.

His Yogic feats found special mention in Encyclopedia Britannica 1973.



THE PROMOTING SOCIETY

The Himalayan Institute Hospital Trust (HIHT) is the Promoting Society of Swami Rama Himalayan University.

HIHT was founded in 1989, by H.H. Dr. Swami Rama and is registered under the Society Registration Act 1860. HIHT, situated at the foothills of the Himalayas, serves the people of Uttarakhand in the field of health, education, rural development etc. The Trust also develops integrated and cost-effective methods to holistic health care, on an ongoing basis.

MISSION & VISION



MISSION

To transform lives by nurturing excellence in the creation and dissemination of knowledge through education, research, innovation and technology besides providing multidimensional humanitarian opportunities for social upliftment in accordance with the ideals of Swami Rama.



VISION

To be recognized as a premier university through providing quality education and healthcare in a manner that is holistic and evolutionary.

MEET OUR CHANCELLOR, VICE CHANCELLOR

TAN SRI DATUK DR. MOHAN SWAMI THE CHANCELLOR

Swami Rama Himalayan University (SRHU), established with the consent of State Government of Uttarakhand in 2013, carries forward the legacy of Gurudev H.H. Dr. Swami Rama, who founded the 'Himalayan Institute Hospital Trust (HIHT)' - the Promoting Society of SRHU.

Our programs imparted by distinguished teachers & researchers are the forefront of education & healthcare delivery system in the region.

Our sprawling campus offers unsurpassed facilities. The students who walk the corridors of our university, not only reach out to their potential as academic achievers, but also prove themselves as all-rounders in their respective careers. I assure you that your choice of selecting this University will emerge as an important milestone in your life too.



DR. VIJAY DHASMANA THE VICE CHANCELLOR

A competent system at the helm has already laid foundation in the fields of medical, paramedical, nursing, science & technology, management, yoga science and social outreach activities for more than two decades.

SRHU offers remarkable academic resources and collegiate infrastructure besides, national and international collaborations to further strengthen education ecosystem. Researchers have access to frontline expertise.

The University provides the right environment for aspirants to take up a career of their choice and to contribute meaningfully to the society.

We help shape our students into exceptional leaders, technocrats, academicians, doctors, nurses, scientists, inventors, yoga practitioners and value-based professionals.

I extend my warm welcome to all those who want to choose a life of self-discovery, challenge and superior value system.

ACADEMIC FOUNDATION & PILLARS



Heritage of 25+ Years of Academic Excellence

Promoted by Himalayan Institute Hospital Trust (HIHT) and with the legacy of Himalayan Institute of Medical Sciences (HIMS), the first private medical college of the state and the first to introduce PhD in medical studies, SRHU is established under Section 2(f) of UGC Act 1956, enacted vide an Act of Uttarakhand No. 12 of 2013.



ACADEMIC FOUNDATION & PILLARS

Student Centric Teaching & Training

Maintaining a healthy student : faculty ratio, our pedagogy is internationally recognized, attributed to continuous curriculum and education enhancement initiatives & programs.



311+ Experienced & Competent Faculty

Dedicated, committed and research-oriented faculty for whom guiding, mentoring & counselling students is a natural and instinctive process. A large number of faculty has been associated with us for over 20+ years.



Industry Academia Interface

Industry specific skill based training is vital to make smart career choices. Collaboration with IBM for Computer Sciences is only a beginning with an aim that student's academic aspirations meet with the industry's needs and expectations.



71+ UG, PG & Doctoral Programs and 40+ Teaching Departments

Faculty of Medicine, Nursing, Science & Technology and Management offer programs that are attuned with the present industrial needs, besides overall student development and heightening of their potential. Range of programs are available in Medical Sciences | Paramedical Sciences | Bio Sciences | Yoga Science & Holistic Health | Science & Technology | Management | Nursing | Vocational Studies etc.



ACADEMIC FOUNDATION & PILLARS

International Faculty

Our students gain from teaching & research experience of faculties from International Universities as they share their knowledge with them at regular intervals. Faculty introduces to the students best practices that they have learnt and gives an exposure of the teaching methodologies outside the country.



Transforming Rural Lives

With a commitment to improve the quality of life & economic well-being, Rural Development Institute (RDI) has been serving the people in the hinterland of Uttarakhand. Hitherto, RDI has supported 200,000+ women & 19,000+ children, provided health education to 10,000+ school students, made drinking water available in 471+ villages, counselled 111,000+ adolescents, as well as set up 64 disabled people's organizations at village level.



COLLEGIATE INFRASTRUCTURE



Clean & Green 200+ acres Picturesque Campus

Situated at the foothills of Himalayas and located next to the city airport, our campus is eco-friendly & energy efficient, backed with rain water harvesting, sewage treatment plant and solar panels.

1200+ Beds, Largest Teaching Hospital of Northern India

Himalayan Hospital is the first private PG teaching hospital of Uttarakhand state. Besides, we are No.1 Hospital across India for providing health services under Atal Ayushman Yojna and the first Kidney Transplantation Centre with Lithotripsy & Advanced Dialysis of Uttarakhand.



COLLEGIATE INFRASTRUCTURE

100+ Laboratories nurture Experimental & Experiential Learnings

Our state-of-the-art laboratories equipped with latest equipment provide a platform to students to develop scientific and empirical learning. All labs at the Medical College are NABL accredited.



Auditorium caters to Knowledge Sharing & Creativity

With a seating capacity of 500 people, acoustically treated, high quality sound system, digital video projectors, the fully air-conditioned auditorium is a quiet & noise free space to hold formal events & activities e.g. guest lectures, conferences, performances etc.



Central Library fosters environment for Learning & Teaching

Central library of SRHU acts as a dynamic engine to push the learning and research in the University. It contains a stock of over 30000 printed documents such as books, reports, printed journals etc. Users can access millions of books online through our virtual library. A subscription to more than 3000 journals from major most reputed publishers of the world such as Elsevier, Walter Kluwer, BMJ, OUP, and T&F puts the library on top among the medical libraries of the country. Reading environment is unmatched with more than 3000 sqm climate controlled 400 reading seats. Besides this Science and Engineering, and Management students and faculty are served from two well stocked libraries situated in HSST and HSMS respectively.



Playgrounds & Sports Facilities for Physical Activities

Integral to fulfilling overall student development and learning needs, our playgrounds and world class sports compound are a place to have fun, relax and maintain good health and well-being.



NATIONAL & INTERNATIONAL COLLABORATIONS



Collaboration for Research & Development with IIT Roorkee (IIT-R)

This collaboration is for inter-disciplinary research and development in the areas of biomedical science, engineering and technology.



Research Collaboration with Rostock University, Germany

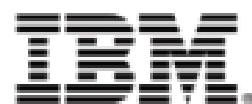
This relationship will significantly advance research and development in the areas of biomedical science, computational and system biology.



Partnership with IBC International Business College, Denmark Together with IBC, SRHU has established SUNCoE, a Center of Excellence for Academic Craftsmanship with Danish Consortium in the areas of applied sciences, education, training and skill development.



Association with Laurea University of Applied Sciences (LUAS), Finland This association has facilitated sharing knowledge & best practices, promoting student innovation and entrepreneurship, faculty and student exchange, as well as developing joint degree program in future, R&D activities etc.



Agreement with IBM for joint Computer Science programs. Together with IBM, students will have access to Industry aligned programs in niche areas of IT with focus on Cloud Computing & Virtualization, Cyber Security & Forensics and Data Science.



Uttarakhand Space Application Centre

Understanding with Uttarakhand Space Application Centre (USAC) for Research. This collaboration is towards knowledge sharing and joint research with faculty members, as well as for training students in Space Application, Software Development, Satellite Remote Sensing Applications, Natural Resources and Disaster Management.



Agreement with All India Institute of Medical Sciences (AIIMS) SRHU has entered into this agreement for collaborating teaching, training & research activities.



A joint initiative with Learnnet Skills to impart skill based education to Undergraduate students including training the youth of Uttarakhand for entrepreneurship & employment.



MoU signed with Om Logistics Ltd. for certification in logistics & supply chain management for BBA students.

RECOGNITIONS & AFFILIATIONS



Recognized as Scientific & Industrial Research Organization by DSIR The Department of Scientific and Industrial Research (DSIR, Ministry of Science and Technology) carries out indigenous technology promotion, development, utilization and transfer.



Accredited by National Accreditation Board for Laboratories (NABL, Quality Council of India, established by Government, Industry Associations and Industry) conducts testing & calibration of medical laboratories.



Recognized as Regional Center for Medical Education by MCI The Medical Council of India (MCI) establishes uniform standards of higher qualifications in medicine and grants recognition of medical qualifications in India and abroad.



Recognized as Nodal Centre by the Institute of Applied Statistical Society (IASS) Institute of Applied Statistics provides financial support to enhance knowledge of statistics and research.



Member of Confederation of Indian Industry. The Confederation of Indian Industries (CII) works to create and sustain an environment conducive to the growth of industry in India, partnering industry and government alike through advisory and consultative processes.



Recognized by ICMR as Collaborative Centre for Cancer Research & Services. The Indian Council of Medical Research (ICMR), the apex body in India for the formulation, coordination and promotion of biomedical research, is one of the oldest medical research bodies in the world.



Authorization by American Heart Association Himalayan Hospital is authorized to conduct Basic Life Support and Advanced Cardiac Life Support courses.



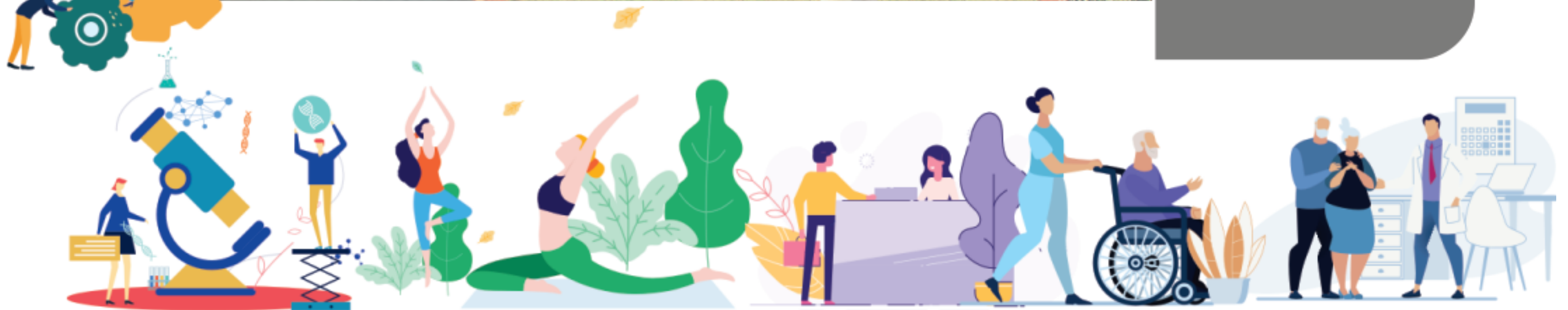
Understanding with Pranab Mukherjee Foundation (PMF) to develop Smart Grams. SRHU and PMF will jointly develop and execute projects concerning health, education, entrepreneurship etc. in the rural areas.



ACADEMIC UNITS



We help the youth transform into caring Doctors, expert Surgeons, compassionate Nurses, efficient Paramedics & Technologists, effective Managers, skilled Engineers, adept Yoga practitioners, creative Bio Scientists, and true Researchers.



HIMALAYAN SCHOOL OF SCIENCE & TECHNOLOGY (HSST)



HSST provides education in-sync with the present industrial needs through its various programs like B.Tech., BCA, MCA and Diploma in engineering. The programs have industry driven curriculum coupled with academic flexibility and are taught using internationally recognized pedagogy.

Student domain knowledge is enhanced through regular workshops, seminars, webinars and guest lectures by industry experts. More emphasis is given on practical learning, innovation and skill development to increase the employability of the students.

The learning process takes place under the guidance of a highly competent team of faculty members. The faculty, having a blend of both industry and academia, provide hands-on learning and help students gain practical insights.

Our laboratories are well-equipped & sophisticated, designed with latest technology to facilitate practical exposure, in tune with the need and aspirations of students, as well as, the demands of the industry. The various departmental labs are equipped with modern & upgraded equipment to keep students abreast with advanced learning methods and procedures.

Our placement support has resulted in students securing placements with good packages, with Rupees Ten lakhs per annum being the highest package so far. The students have been placed with organizations of repute like Wipro Technologies, Capgemini, Deloitte, IBM, Cognizant, TCS, Infosys, Rubico IT, Evon Technologies, BYJU'S, Concentrix, Extramarks, Ozone Overseas Ltd., JBM, Suavao and others in the placement drive.

HIGHLIGHTS

- Industry-Academia Interface
- Innovative Learning & Entrepreneurship
- Internationally Recognized Pedagogy
- Collaborations with IIT Roorkee, IBM, ISRO (USAC), IBC – Denmark
- Industrial Training & Certification Programs
- Mentorship and Personality Development Programs
- Excellent Placement Record

SCIENCE & TECHNOLOGY PROGRAMS

POSTGRADUATE DEGREE

Master of Computer Applications (MCA)

Master of Science (M.Sc.) in Statistics with specialization:

- Health Sciences & Analytics
- Actuarial Sciences & Analytics

UNDERGRADUATE DEGREE

Bachelor of Technology (B.Tech) in Computer Science & Engineering

Bachelor of Technology (B.Tech) in Computer Science & Engineering with IBM Badge in Cloud Computing & Virtualization

Bachelor of Computer Applications (BCA)

Bachelor of Science [B.Sc. (Hons.)] in Data Science

DIPLOMA IN ENGINEERING

Civil Engineering (CE)

Mechanical Engineering (ME)

Electrical Engineering (EE)

Biomedical Engineering (BME)

In addition to the above, the school runs a Department of Applied Sciences for development of creative and analytical abilities of the students

DEPARTMENT OF COMPUTER & INFORMATION SCIENCE

Master of Computer Applications (MCA) | Bachelor of Technology in Computer Science & Engineering (B.Tech. CSE) | Bachelor of Technology in Computer Science & Engineering (B.Tech. CSE) with IBM Badge in Cloud Computing & Virtualization | Bachelor of Computer Applications (BCA)

The aim of the department is to contribute towards the advancement of Computational Technologies and provide industry with skilled resources in engineering and other fields requiring computing skills. It strives to impart high quality technical education in theory, design, development and

application of Computer Systems and Information Processing techniques. We also have a collaboration with IBM for joint teaching and certification in niche areas of IT such as Cloud Computing & Virtualization, Cyber Security & Forensics and Data Science.

- Exposure is given to the students in various fields - from Microsoft valuable licensing subscription to Visual Studio 2012, Dos Box, GCC, Turbo C along with MSDN academic alliance. Students have access to well-furnished laboratories with modern & advanced infrastructure and a wide range of licensed software (such as MySQL 2012 express edition, Tally-9, Turbo C++, JDK, Visual Studio Professional 2012, WAMP-2.5, Cisco packet tracer v6.0.1) that provide a distributed computing environment.
- These laboratories are set on Unix environment with different operating systems viz. Centos, and Fedora (by Red Hat), IBM Rack Mounted servers, and state-of-the-art hardware.
- Students are guided by competent faculty involved in high quality research in the field of Database and Information Systems, Programming Languages, Computer Networks and Distributed Systems, Algorithms, Artificial Intelligence, Software Engineering etc.
- Department has taken membership of Computer Society of India (CSI) & a student chapter of CSI has been established. Through this chapter students participate in various technical & non technical activities at national level.



HIMALAYAN SCHOOL OF SCIENCE & TECHNOLOGY (HSST)

MAJOR LABORATORIES IN THE DEPARTMENT

- DBMS
- Computer Network
- Algorithms
- Web Technology
- Computer Graphics
- Programming Labs in Java, C/C++, Linux Programming, Net Programming and Python
- Centre of Excellence Lab in Cloud Computing

EMPLOYMENT OPPORTUNITIES

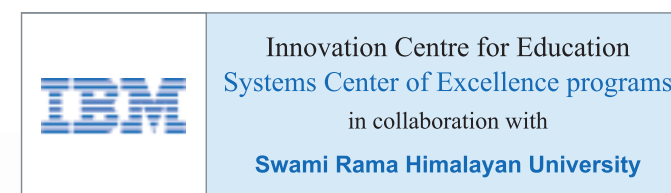
Jobs are available in the field of programming, software development & testing, information systems operation & management, telecommunications & networking, graphics & multimedia, computer science research etc.

One may also pursue his/her career as a database administrator/designer/operator, mobile application developer, robotics expert, website designer, software analyst, mobile expert, entrepreneur or teacher.

COLLABORATION WITH IBM

SRHU and IBM have collaborated to provide specialization tracks with IBM Certification in areas of Cloud Computing & Virtualization, Cyber Security & Forensics and Data Science. Technology courses and programs are offered through the IBM Innovation Center for Education (ICE). The program offerings are industry-aligned, and the courseware has been redesigned from the ground up, with a state-of-the-art delivery mechanism to enable students to learn industry-relevant skills.

The students get hands-on learning opportunities, guest lectures by industry experts, online labs, onsite & offsite events, and much more to keep learning, having fun, being productive and engaging while infusing deep skills for the professionals of the future. Students also get exposure to the tools used in industry in the Cloud Computing & Virtualization, Cyber Security & Forensic and Data Sciences domain and develop team work experience of professional skills for IT industry.



On successful completion of the Program, the Student becomes eligible for an IBM digital badge.

The IBM ICE Digital Badges are a new online standard to recognize and verify skills acquired throughout the learning process. Each badge contains verified metadata describing the qualifications and rigorous process necessary to earn them. A Digital Badge can be posted on social and professional networking sites as well as on one's digital signature.

IBM ICE Digital Badge is a Globally recognized standard which provides you with significant benefits:

- Digital version of your credentials
- Recognition of industry aligned skills
- Free access to a badge wallet for easy management of your badges
- Secure and verifiable means of storing and publishing your credentials



Students can pursue a career as Cyber Forensics Solutions Architect / Tech Consultant / Planning & Expansion Specialist / Malware Analyst / Examiner / Engineer / Cyber Security Architect / Administrator / Information Security Analyst / Expert at antivirus firms / Computer and Information System Manager / Network Security Analyst etc.

Data Science

The Program objective is to enable the students to identify, analyze and solve business problems using Analytics in the specific areas of Business Analytics, Data Warehouse & Data Mining, Business Intelligence, Social, Mobile & Web Analytics.

The Badge earner will acquire good critical thinking, visual modelling and analytical skills and therefore can apply descriptive, predictive, social, web & mobile analytics to business situations to define appropriate solutions. The student will gain sufficient knowledge on Process Mapping, Risk Assessment, Data Warehouse and Multidimensional Modelling, and will also learn the usage of several analytical tools.

B.Sc. (Hons.) in Data Science

It is a 3 year, 6 semester-based a full-time interdisciplinary program that uses scientific methods based on mathematical and statistical models, processes, algorithms, and systems to extract knowledge and insights from structured and unstructured data, and apply knowledge and actionable insights from data across a broad range of application domains.

The program is based on the Choice Based Credit System module with the inclusion of core courses, disciplinary and generic electives from areas of emerging technologies related to Artificial technologies, Machine Learning, Deep Learning, and Cloud-based technologies. The Personality development classes, value-added courses, live projects from industry, and skill enhancement certification/badges are the highlights of the program.



SYSTEM CENTRE OF EXCELLENCE (SCOE) - ADD-ON SPECIALIZATION COURSES FOR UNDERGRADUATE PROGRAMS

Cloud Computing & Virtualization

Program objective is to build proficiency in the students to identify, analyze and solve Cloud Computing problems by applying knowledge of mathematics, science and engineering with modern engineering tools in the specific areas of IT infrastructure landscape, cloud computing fundamentals, cloud computing architecture & deployment models and cloud security & management etc.

The Badge earner will have a good knowledge of virtualization techniques and cloud computing concepts. The student will have an understanding of the cloud reference architecture of NIST, IBM, etc. and different cloud deployment models like Private, Public and Hybrid along with delivery models like IAAS, PAAS and SAAS.

Besides, expertise in setting up and administering Open Stack Private Cloud, Cloud Security and Management will also be achieved.

Cyber Security & Forensics

Cyber Security & Forensics is a branch of digital forensic science pertaining to legal evidence found in cyber space and digital storage media. In the digital age, the need for cyber experts has grown exponentially as the country is heading towards an internet explosion mostly fuelled by e-commerce, e-banking, e-governance and the social media.

The objective of the program is to prepare the student for an exciting career in the domain between government cyber organizations and national government such as DRDO, ISRO or private firms with needs of IT security.

HIMALAYAN SCHOOL OF SCIENCE & TECHNOLOGY (HSST)

DEPARTMENT OF CIVIL ENGINEERING

Diploma in Civil Engineering

With access to hi-tech interdisciplinary laboratories, this department encourages students to take on technical challenges in various areas of civil engineering and imparts skills in problem solving, design and interpretation of experiments. Emphasis is on fundamental principles and development of creative & analytical abilities enabling students to handle current & future scientific and technological challenges in the industry.

Students complete projects under the mentorship of competent faculty in the field of Transportation Engineering, Construction Technology & Management, Geotechnical Engineering, Structural Engineering, Water Resources, and Remote Sensing & GIS etc.

MAJOR LABORATORIES IN THE DEPARTMENT

- Environmental Engineering
- Structural Engineering
- Surveying
- Concrete Technology & Building Material
- Transportation Engineering
- Fluid Mechanics & Hydraulic Machine
- Soil Mechanics



EMPLOYMENT OPPORTUNITIES

Civil Engineers can work in government departments, MNCs, Public Sector Units (PSUs) as well as private organizations. Students can find jobs as Design Engineer (structural, roads & highways), Site Engineer (building, roads, hydroelectric, tunnel projects), Quality Control Engineer, Quantity Engineer, Safety Engineer, Land Surveyor, Geotechnical Engineer, Draftsman / CADD Engineer.

Diploma holders are eligible for government jobs as well as opportunities created through entrepreneurship, and startups.



HIMALAYAN SCHOOL OF SCIENCE & TECHNOLOGY (HSST)

DEPARTMENT OF MECHANICAL ENGINEERING

Diploma in Mechanical Engineering

Students are prepared to successfully engage in careers in mechanical engineering. The programs provide comprehensive theoretical and practical knowledge in the latest techniques of CNC based Manufacturing, Automation, Automobile, Thermal Engineering and CAD Designing.

Students are engaged in innovative projects in modern labs/workshops under faculty members who are involved in high quality research.

Students also get exposure to industry through (plant) visits, industrial training, industry based elective courses and guest lectures by corporate experts.

MAJOR LABORATORIES IN THE DEPARTMENT

- Computer Aided Design & Manufacturing along with CNC Machines
- I.C. Engines & Applied Thermodynamics
- Computer Aided designing & Drafting with Auto CAD 2018 & Creo 3.0
- Mechanical Measurements & Metrology
- Fluid Mechanics & Hydraulic Machines
- Heat and Mass Transfer
- Refrigeration and Air Conditioning

EMPLOYMENT OPPORTUNITIES

Mechanical Engineers can find employment both in the government and private sector undertakings. Major industries for mechanical engineers are automobiles, space research, aeronautical, energy & utilities, air conditioning, bio-mechanics industry, etc.

Mechanical Engineers have job opportunities in Research and Development (R&D), Design, Production, Analysis and Testing, Installation, and Maintenance.



HIMALAYAN SCHOOL OF SCIENCE & TECHNOLOGY (HSST)



DEPARTMENT OF ELECTRONICS & ELECTRICAL ENGINEERING

Diploma in Biomedical Engineering

Himalayan School of Science & Technology is one among the few colleges of the northern India that offers Diploma programme in Biomedical Engineering. This area of engineering is a unique and a multidisciplinary fields. This field provides solutions to medical problems using latest technology based equipment's. This profession gives Biomedical Engineers to develop, design and improve the medical devices for diagnosis, operation and treatment of diseases and other health ailments.

At present in the country more focus is on building infrastructure for health care sector and to improve the quality of health care. Due to this there will be more demand of Engineers, Technicians and medical equipment in the coming years. Hence the companies that manufacture these biomedical equipment are looking for skilled Biomedical Engineers and Technicians.

College encourages students to undergo internship at our Himalayan Hospital within the campus. Our Hospital is one of the reputed hospitals in the Northern India. This benefits the

students to get hands on training.

MAJOR LABORATORIES IN THE DEPARTMENT

- Biomedical Signal/Image processing Lab (MATLAB)
- Biomedical Instrumentation Lab
- Analytical Bio instrumentation Lab
- Analog & Digital Electronics Lab
- Microprocessors & Microcontrollers Lab
- Biomedical Equipment Lab

CAREER OPTIONS IN BIOMEDICAL ENGINEERING:

- In Hospitals as Biomedical Technicians.
- In Engineering Firms as Biomedical Engineers and Sales & Service Engineers.
- Medical and Healthcare Industry as an Application Engineer.
- Biomedical software application companies as Content & Application Developer.
- In Academic Institutions as Lab Technicians.

Diploma in Electrical Engineering

The department aims at building practical learning and rich design experience, besides a strong theoretical foundation. In addition to core subjects, courses based on software such as MATLAB & OrCAD PSpice for circuit designing DSP and wireless communication play an important role, programming languages like C, C++ and courses like Embedded Systems, Computer Networks make the program attractive for IT industry. We inculcate practical thinking and application among students training them during the lab / class room sessions so that their understanding and problem solving abilities are enhanced. We believe in "Learning by Doing" and encourage students to do & involve in project making from the beginning of the course itself.

Professional needs of the students are addressed through various in-house events such as technical events, seminars, PDP classes, workshops, conferences etc. Guest lectures of speakers from IITs, NITs and other regional engineering colleges are also organized on a regular basis.

Students are provided opportunities to acquire application skills in electrical machinery, electronics equipment and instruments by way of projects in electronics, communication and electrical engineering, under the guidance and mentorship of competent and research oriented faculty.



MAJOR LABORATORIES IN THE DEPARTMENT

- Digital Integrated Circuits
- Microprocessors & Microcontrollers
- Microwave Engineering
- Power System
- Power Electronics
- Control Systems
- Switchgear and Protection

EMPLOYMENT OPPORTUNITIES

Graduates of electrical engineering get jobs are in power corporations, renewable energy companies, process control etc.



HIMALAYAN SCHOOL OF SCIENCE & TECHNOLOGY (HSST)



This department is multi-disciplinary and complements the needs of all academic units at SRHU. Students get an opportunity to interweave and integrate their creative and analytical abilities.

DEPARTMENT OF APPLIED SCIENCES & HUMANITIES

Master of Science (M.Sc.) in Statistics with specialization:

- Health Sciences & Analytics
- Actuarial Sciences & Analytics

M.Sc. Statistics is a 2 year, 4 semester-based full-time interdisciplinary programs offered with specialization in Health Sciences & Analytics and Actuarial Sciences & Analytics from 2nd year onwards. To put theoretical knowledge into practice essential Industrial training shall be mandatory for every student at the end of the foundation year, first year. Students shall be allowed to study their choice of specialization through the discipline-specific electives along with generic elective from the courses related to Statistics, Business, Finance, and Health Science domain.

- **M.Sc. Statistics** with specialization in Health Sciences & Analytics and Actuarial Sciences & Analytics is going to be offered for the first time in Uttarakhand.
- **Health Analytics** is used to solve problems in public health, medical and biomedical industry. The health datasets are analyzed using statistical models and computational modeling to assess large volumes of data from clinical trials, electronic medical records, genetic and genomic epidemiology, and environmental health.
- **Actuarial Science** deals with evaluating risks and maintaining the economic stability of insurance, banking and financial organizations. Actuaries collect all pertinent data and apply mathematical, statistical models & financial theory to quantify the risk of an event so that its financial impact can be determined.

APPLIED SCIENCES

Applied Chemistry: In this discipline, students learn concepts and techniques of chemistry and apply them in problem solving related to the various domains of engineering. Chemistry laboratory is well-equipped and supports research work in engineering chemistry.

Applied Mathematics: This discipline aims to give strong mathematical background to engineering students of all departments. It offers mathematical courses including complex variables, computational mathematics, discrete mathematics, probability and random processes, operation research etc. Numerical Analysis is specifically designed to meet the industry requirements in computer application.

Applied Physics: In this discipline, emphasis is on fundamental and applied concepts of physics. Access to Physics laboratory equipped with modern instruments provide students hands-on experience and understanding of the experimental evidence of the laws of physics.

Environmental Science: The aim of this discipline is to sensitize and develop awareness about environmental concerns and problems. The department offers an interdisciplinary course which deals with the scientific study of environmental systems and its impact on organisms and ecological degradation that has occurred due to human-environment interactions.

HUMANITIES

English and Professional Communication: This discipline aims at helping the students gain proficiency in listening, reading, writing and speaking skills. Personality Development and Grooming Classes further instill life skills and increase employability.

Social Sciences: Sociology provides learning opportunities in Human Values & Professional Ethics and Industrial Sociology. Sociology as a subject offers viable and diverse opportunities in social work, social welfare, social research & NGOs.

ELIGIBILITY FOR SCIENCE & TECHNOLOGY PROGRAMS

POSTGRADUATE DEGREE

Master of Computer Applications (MCA)

Regular Entry: Candidate must be a Graduate in any discipline with an aggregate of minimum 50% marks and Mathematics as a compulsory subject at 10+2 or Graduation level.

Duration: Two years (4 semesters)

Master of Science (M.Sc.) in Statistics

Bachelor degree in Statistics/Mathematics/ Biostatistics/ Health Statistics or having Bachelor Degree with at least two full courses on Mathematics or Statistics from a recognized university in India or abroad with a minimum 50% of aggregate marks/equivalent grade in all subjects.

Duration: 2 Years (4 semesters)

Number of Seats: Twenty

UNDERGRADUATE DEGREES

Bachelor of Technology - Computer Science & Engineering (B.Tech. CSE) | Bachelor of Technology in Computer Science & Engineering (B.Tech. CSE) with IBM Badge in Cloud Computing & Virtualization

Regular Entry: Candidate must have passed 10+2 (Class XII) or its equivalent examination from a recognized Board in the subjects of Physics, Mathematics, Chemistry / Computer Science & English and must have obtained minimum 50% marks in aggregate in Physics, Mathematics, Chemistry / Computer Science taken together, with an overall aggregate of 55% marks in all subjects.

Duration: Four years (8 semesters)

Lateral Entry: A candidate having diploma or B.Sc. degree with minimum 55% marks shall be eligible for direct admission to second year of B.Tech. Program under lateral admissions. The criterion for direct admission is given below:

Three years Diploma in Engineering / Technology with minimum 55% aggregate marks after 10th (Class X).

OR

Two years Diploma in Engineering / Technology with minimum 55% aggregate marks after 10+2 (Class XII).

OR

B.Sc. with Mathematics, Physics, Chemistry or Computer Science as compulsory courses with minimum 55% aggregate marks.

Duration: Three years (6 semesters)

Bachelor of Computer Applications (BCA)

Candidate must have passed 10+2 in any discipline with Mathematics as an essential subject and an aggregate of minimum 50% marks.

Duration: Three years (6 semesters)

Bachelor of Science [B.Sc. (Hons.)] in Data Science

Candidates must have passed 10+2 (an aggregate of minimum 50% marks) in any discipline with Mathematics as an essential subject.

Duration: 3 Years (6 semesters)

Number of Seats: Thirty

DIPLOMA PROGRAMS IN ENGINEERING

Diploma in Civil Engineering / Mechanical Engineering/ Electrical Engineering / Biomedical Engineering

Regular Entry: Candidate must have passed High school (class X) or its equivalent examination from any recognized Institute/Board with a minimum of 45% aggregate marks. Candidate should have studied science and mathematics at High School level.

Duration: Three years (6 semesters)

Lateral Entry: Candidate must have passed ITI (2 years duration)/10+2 examination with science streams or its equivalent from any recognized Institute/Board.

Duration: Two years (4 semesters)

HIMALAYAN SCHOOL OF MANAGEMENT STUDIES (HSMS)



At Himalayan School of Management Studies (HSMS), we prepare our students with the requisite hard & soft skills that match with the present-day needs of the industry. The programs we offer are designed to bring about an overall development of the students that not only instill confidence, knowledge & a strong value system but also help enhance their inherent potential.

Both, at the Under Graduate and Post Graduate level, we help students take up the right career and plan their future progress. Apart from credit based courses providing the vital core skills, we also offer non-credit courses such as communicative English, disaster management, environmental studies, etc. Additionally, standardized yoga classes for the students help in development of their inner-self and “Science of Joyful Living” workshops augment holistic development of students.

Our Management School practices a student-centric learning pedagogy enabling them to imbibe the curriculum innovatively and effectively. Our teaching and training methodology includes multi-disciplinary programs and projects, use of multimedia, lectures, case studies, games, simulations, group activities, role play, scenario analysis, group discussions, quizzes, etc. We also provide exposure by way of industry visits, conferences, field trips, corporate talks, seminars/summits, internships, development programs, workshops, and exchange programs.

We have a highly competent faculty which carries with it a blend of both industry and academic skills. A great majority possess doctoral degrees in their relevant disciplines with the rest pursuing their doctoral education. Some of our faculty also possess case teaching certifications for bringing the “field” to the classroom.

A dedicated Placement Cell for 'Summer Internship' and 100% placement support to students is a center of service to them, within our campus. Our students have secured placements with decent packages in organizations of repute, such as, Axis Bank, HDFC Bank, Kotak Mahindra Bank, Vodafone, Capital Via, Redington, Kazo India, Schneider India, Extramarks, Academia Guru, Ozone Overseas Ltd., JBM, Suavao etc. through our placement drive- with our list of industry partners increasing every year.

HIGHLIGHTS

- Industry-Academia interface
- Compulsory industry projects and internship programs
- Industrial training & certification program
- Innovation & Entrepreneurship
- Visits by eminent guest speakers

MANAGEMENT PROGRAMS

POSTGRADUATE DEGREE

Master of Business Administration (MBA)
with specialization in:

- Financial Management
- Human Resource Management
- International Business
- Marketing Management

UNDERGRADUATE DEGREE

Bachelor of Business Administration (BBA)

with focus on Supply Chain Management & Logistics, and, Rural Management, besides BFSI, Marketing, & HR.

Bachelor of Commerce [B.Com. (Hons.)]

with focus on capital markets, besides accounting, finance, & financial institutions.

POSTGRADUATE DEGREE

Master of Business Administration (MBA)

The MBA program lays the foundation for the core fundamentals of business while emphasizing on global, technological and entrepreneurial perspectives and subsequently, helps students build their specialization across functional areas viz. Financial Management, Human Resource Management, International Business and Marketing Management. It equips students with abilities such as creativity & innovation, analytical thinking, conceptual ability, problem solving for intelligent & ethical decision-making and leadership skills.

The curriculum incorporates contemporary case studies, group projects, corporate lectures, classroom discussions and computer simulations. The program gives due importance to the development of interpersonal skills through teamwork, joint projects, organizing programs, etc. It also gives exposure through interactions with students from other disciplines, visits to companies & industries, and so on. The curriculum also provides space for participation in the extra-curricular activities viz. debates, dramatics & sports, thereby ensuring holistic development and realization of the full potential of a student.

SPECIALIZATION

Finance

The Finance specialization will enhance the student's capabilities in decision-making with respect to financial resources, and addressing contemporary financial risks, possibilities & challenges in business. It will help develop primary skills required in financial analysis, funds management, understanding of capital markets, risk management, economic research, funding of bank loans & credit services, wealth management & customer relationships, etc. Additionally, students will be able to build a strong foundation around the Mathematics of Financial Instruments.

Human Resource

This specialization will advance the knowledge, methods and skills necessary in the students to meet the human resource challenges of today's changing workplace and the diversified workforce. Students will be able to optimize the human resources with an operational understanding of a business, gain an understanding of HR best practices, innovations in HR systems, change management, and deployment of human capital within the organization.

International Business

The aim of this specialization is to impart the knowledge, skill sets and training required for handling international operations, managing risk, marketing, or sourcing at the global level. Students will be able to build an outlook of strategic planning for international operations and specialized functions such as international marketing, finance and human resource management. Furthermore, students will also develop cross-cultural communication skills to learn, understand and appreciate cultural diversity, at the global level, for better collaboration.

Marketing

Specialization in Marketing will cultivate skills and knowledge for effectively developing, promoting and branding goods & services in this fast-paced technology driven world. Students will learn to build market, competitor and customer insights, as well as, to develop and execute marketing strategy. Students will also acquire the skills for business development and sales.

EMPLOYMENT OPPORTUNITIES

- An MBA student will be able to find career opportunities at Manager/Executive positions.
- Finance specialization can help them in building a career in consultancy, credit, insurance, financial analysis, investment banking or investing sales trading, etc.
- HR students can seek positions in compensation & benefits, employee relations, recruitment, organizational development, staffing, learning & development, etc.
- Marketing specialization could enable placements in marketing sales, business development, marketing, sales, product, digital marketing, corporate sales, market research analysts, etc.
- International Business specialization offers career opportunities in logistics and supply chain, international financial management, international marketing, export houses, export consultancy, warehousing, etc.

ELIGIBILITY

Candidate must be a Graduate in any discipline with an aggregate of minimum 50% marks and have a valid CAT/ XAT/ GMAT/ CMAT/ MAT score.

Duration: Two years (4 semesters)



HIMALAYAN SCHOOL OF MANAGEMENT STUDIES (HSMS)



Add-on Optional Certification for MBA students
In collaboration with DCAC, Denmark

CERTIFICATED INTERNATIONAL MANAGEMENT 2.0

An add on certification in collaboration with DCAC is being offered to those who take admission to MBA program. In this certification, the student will receive direct teaching from International faculty from Denmark and also get an opportunity to visit Denmark in one semester where s/he will be provided industry exposure in addition to teaching/ academic activities by the faculty in Denmark.

How to be a manager in the future in a global world?

Unfortunately, many manager-programs and their courses teach how to be a manager and relevant only to the "local" area. Management 1.0. They do not teach how to manage in the future. But we do, we call it "International Management 2.0". Modern companies do not only produce products for their own country but for the world, and the employees come from different parts of the world. This means different cultures are coming together and that can often be a challenge for the managers.

To cater to such scenarios, **SRHU** and **DCAC (Denmark)** have designed this program for the managers of the future who want to work in multinational companies.

If you see yourself as an international manager in a multinational company, you should go for this program. You can find opportunities to work with international people who work worldwide and have the world as their workplace.

To add further, India has been experiencing an enormous economic growth over the years. Hence numerous international companies have established offices in India, and India has done the same around the world.

We have considered the existing MBA courses of SRHU and the best courses from DCAC and aim to deliver this supplement to the two-year MBA program.

Student can get the best out of the following DCAC courses:

- International management, basic and advance
- Project management, basic and advance
- Innovation, basic and advance
- International leadership, basic and advance

As a student, your first, second and fourth semester of study will be in India and in third semester you can go to Denmark (for 3-4 weeks) to study for some of the above courses.

Denmark at a glance

Denmark is a small Scandinavian country (43,098 km²) in northern Europe with a population of 5,585,000 where Copenhagen is the capital. The official language in Denmark is Danish but English is widely spoken.

Why Denmark?

Denmark is a little country where, for the last 2000 years, considering that raw materials are limited, education has become vital for development. Denmark has for generations

that its future, wealth and prosperity rely on its knowledge and capability to look out into the world. This behavior, DCAC wants to share with the people of India. Investment in education, innovation and research thus becomes the decisive "raw material". Employability is the aim in everything one does at DCAC.

Danish Educational System

The Danish educational system emphasizes independent thinking, each student taking responsibility for his or her own career, project, group work and creativity. The practical and applied experience is what makes a student great. In one of the happiest nations in the world, we teach our students the skills they need for the future through a problem-solving approach.

Our pedagogy and didactic methods are based on individual learning depending on where the student is in the learning process.

We use different modern learning methods, for example blended learning and learning based on teacher and students on the one hand - and we involve the latest technological and digital opportunities on the other hand. We teach our students to be successful managers in a globalized world through cooperation in groups and projects.



Our learning methods are workplace oriented in order to exchange skills related to collaboration so that all our students learn to take independent decisions that are required.

With these methods our students will learn to see the world differently and gain stronger soft skills e.g. influencing, collaborating and thinking adaptively.



HIMALAYAN SCHOOL OF MANAGEMENT STUDIES (HSMS)



UNDERGRADUATE DEGREE

Bachelor of Business Administration (BBA)

The program aims to develop leadership qualities, creativity and entrepreneurial skills amongst students and help them handle the future challenges in business. It helps students understand and leverage the ever-changing information & technology.

The program content draws heavily from the inter-disciplinary areas, is contemporary, socially relevant and employment focused. Students are exposed to advanced pedagogical practices, ability enhancement courses, discipline specific courses, summer internship and research projects. Besides, live industry projects, surveys of real life situations, rural immersion program and hands-on experience in the world of business is also carried out.

The first year is utilized to build the basic concepts in various business related subjects, while the second year is devoted to functional areas of management and in the third year, students will have the option to choose one of the following areas of specialization - Human Resource, Marketing, Supply Chain Management and Rural Management (with Finance and Marketing concentration).

*Collaboration with Om Logistics Ltd

Considering the high growth in supply chain & logistics sector and the resulting job opportunities in it, HSMS has an active collaboration with Om Logistics Ltd, a dominant player in the (Supply Chain & Logistics) sector in the country. Under this collaboration, their industry executives teach practical aspects and relevant skills required in this sector. The company also provides internships and placement opportunities to BBA students.

**Collaboration with Mahatma Gandhi National Council for Rural Education (MGNCRE), Govt of India (Hyderabad)

With a view to tapping the large potential of the rural sector, HSMS has started a new elective area in Rural Management and for increasing its effectiveness, it has entered into a collaboration with the well known Centre for rural management education, **MGNCRE**. The centre supports HSMS by way of providing educational content, training faculty, as well as, motivating & training students in the various growing sectors in rural areas and helping in relevant internships and job placements.

Thus **the real value of the BBA program** is multifold:

- acquiring skills for a career in Supply Chain & Logistics and to earn a Certification in this area, as well.
- gaining competence in a career in the rural sector (both setting up own venture & working in corporate sector).
- getting training for banking, insurance, finance, marketing, & human resource management functional areas in any business.

EMPLOYMENT OPPORTUNITIES

A BBA graduate can hope to set up own venture or entry-level positions in corporate house and factory. Jobs can also be sought in companies as members of sales teams, HR executives and entrepreneurship.

ELIGIBILITY

Candidate must have passed 10+2 with 50% marks in aggregate, with English as an essential subject.

Duration: Three years (6 semesters)

Bachelor of Commerce [B.Com. (Hons.)]

This program empowers the students with knowledge, techniques, skills, and concepts of different areas of accounting & commerce and helps develop in them, an attitude for working effectively and efficiently in a business environment. The program gives exposure to students in entrepreneurship, teamwork, and interpersonal skills.

With employment at focus, the program content is sourced from the inter-disciplinary areas, is contemporary, socially relevant and lays emphasis on Accounting, Economics, Taxation, Business Laws, Auditing and Assurance, Cost Accounting, Financial Management, Financial Reporting, and Financial Decision Making.

Students are trained using advanced pedagogical practices, hands on training on Tally and EXCEL, ability enhancement courses, discipline specific courses, summer internship, and research projects. Besides, live industry projects, surveys of real life situations, and hands-on experience in the world of business is also carried out.

Collaboration with National Stock Exchange (NSE)

HSMS has an understanding with National Stock Exchange (Delhi) for certification of certain courses in B.Com (H) by NSE, enabling students to develop careers in capital markets.

The **real value of the B.Com (H)** program lies in the fact that:

- It enables you to work in various companies in the accounting/ finance area, besides banks and financial institutions.
- It empowers you to smoothly progress through other value-add programs (eg. Chartered Accountancy).
- As you clear the NSE aligned courses, you get an additional certification from the stock exchange opening up opportunities in capital markets.



EMPLOYMENT OPPORTUNITIES

B.Com (H) graduates can carve a career in the fields of accountancy, banking, consultancy (tax, finance, insurance), travel management, BPO/KPO jobs, and entrepreneurship.

ELIGIBILITY

Candidate must have passed 10+2 or equivalent examination with Commerce / Economics / Mathematics / Computer Science as one of the subjects securing a minimum of 50% marks in aggregate, and English as an essential subject.

Duration: Three years (6 semesters)



HIMALAYAN INSTITUTE OF MEDICAL SCIENCES (HIMS)



Himalayan Institute of Medical Sciences (HIMS) is the first medical college in the state of Uttarakhand and came into existence in December 1995 with an objective to make it a seat of excellence of learning and training medical students. HIMS endeavors to create ethically sound medical professionals who are ready to undertake responsibility of health care in our country. It has an intake capacity of 150 MBBS and 111 MD/MS, Post Graduates students annually. The institute also offers super specialty courses (M.Ch in Neuro Surgery, M.Ch. Surgical Oncology, DM-Neurology, Ph.D., Post-Doctoral Fellowship in Critical Care and Neonatology). The institution is first in the state to adopt a competency based curriculum for under graduates and post graduate students. In addition Institute offers academic courses in various paramedical subjects at undergraduate and postgraduate level.

The institution has state of art auditorium, lecture theatres, labs and demonstration rooms. The institution has 200 acres of lush green campus with Wi-Fi facilities and play grounds and residential facility for faculty and hostel facilities separately for Boys and Girls, comprising of 596 rooms for under graduate & 350 rooms for Post Graduate students.

All efforts are made to provide excellent academic environment. The Library is open on all working days and houses latest edition of books with an access to over 19,189 books, 183 print journals and 3016 E-journals alongwith 7805 back volumes of journals. Every year the institution publishes around 150 research papers by its esteemed faculty in various national and international journals.

The Department of Medical Education is a unique feature of this Medical Institute and has the distinction of being recognized by NMC to train medical faculty of 18 Medical Colleges of Uttarakhand, Uttar Pradesh and Himachal Pradesh including Government colleges.

Learner and Teacher are equally essential components of learning, it is a matter of pride that we have got well experienced and able faculty as teachers coming from the best of institutions of our country.

The institution is equipped with cadaveric lab, the first of its kind in north India to train Post Graduates, Practicing surgeons and faculty in various endoscopic procedures, joint replacements, Spinal Surgeries, Arthroscopy etc.

To impart training in clinical aspects, we are supported by 1100-bedded Himalayan Hospital covering all specialties and super specialties. Students have unique opportunity to learn the art of clinical medicine with over 2000 outpatients on a daily basis and 24 X 7 emergency services. The institution adheres to the philosophy of providing cost effective treatment to the underserved population of the region. The Hospital of HIMS has been adjudged as first in the country for treating highest number of patients under AYUSHMAN scheme. It is one of the few Medical Colleges in country to have NABH accredited Hospital.

The Hospital is supported with state of art radiology department, Nuclear Medicine Department with PET CT scan, NABL accredited diagnostic labs which provides students first hand experience to learn on the latest diagnostic tools.

The Hospital has a dedicated Cancer center offering comprehensive cancer care with state of art facilities for radiotherapy and Bone Marrow transplant. The institution has state of art dialysis center and has facilities for renal transplants.



The institution has a strong community outreach programme serving through its urban health center and three rural centers, where students are posted in rotation to provide opportunity to sensitize them towards patient care hailing from various social, economic, cultural and environmental settings.

HIGHLIGHTS

- First medical college of the state
- 1100-bed largest super-specialty PG teaching hospital in Uttarakhand
- Hands-on learning
- NABL accredited labs
- Nuclear Medicine Department equipped with PET CT Scan
- NABH Accredited Hospital
- Cadaveric Lab
- Regular CMEs / Guest lectures/ National and International Academic conferences
- Competency based medical education

- Internationally recognized pedagogy
- NMC Approved Medical Education center to train medical faculty of 18 Medical Colleges of Uttarakhand, Uttar Pradesh and Himachal Pradesh including Government colleges

MEDICAL PROGRAMS SUPERSPECIALITY COURSES

DM - Neurology
M.Ch. Surgical Oncology
M.Ch. Neurosurgery

The admission to all Postgraduate Superspeciality programme is done at National level through competent authority as prescribed by the Statutory Council (NMC) and as per Govt. of India Gazette notification from time to time on the basis of super NEET merit.

FELLOWSHIP

- Critical Care Medicine
- Neonatology

Admissions are made on the basis of performance of the candidates in the interview, work experience, publication of original research articles and attendance in scientific conferences/ workshops.



HIMALAYAN INSTITUTE OF MEDICAL SCIENCES (HIMS)



Master of Science (M.Sc.) Clinical Research

This program has a benchmarked, niche-oriented curriculum with innovative experiential pedagogy. The hallmark of this program is a strong student-teacher rapport and inquiry based learning conducive to breed excellence. Students have access to state-of-the-art labs and expertise in the areas of clinical / biomedical sciences. Students interact with research-oriented, well-qualified, internationally renowned faculty during the course of study and also get a chance to present papers at national / international forums, as well as, opportunities for international internships.

Students are provided with unique opportunity to train themselves with top medical institutions in the health care industry viz. HIMS (Jolly Grant), Medanta - The Medicity (Delhi NCR), MAX Healthcare (Delhi) and premier Pharma Companies, CROs, etc.

ELIGIBILITY

Graduates, Post Graduates in Bio Stream including B.Pharm / M.Pharm / B.Sc. Nursing / BAMS / BDS/ MBBS / and Health & Allied Sciences.

Duration: Two years (4 Semesters)

Number of seats: Twenty

Master of Science (M.Sc.) Epidemiology

Epidemiologist are known as "The disease detectives". M.Sc. Epidemiology Program prepares the students with specialized knowledge and conceptual, methodologic, and biostatistical skills needed to engage in epidemiologic research and opportunities for applied experiential learning in epidemiologic practice, research & policy.

The pedagogy sessions include lectures, practicum, hands on activities, field work, assignments, internship, and dissertation. The students are made to work on real world problems, innovative styles of teaching are being incorporated to increase their engagement levels. Feedback, learning with the help of a mentor not only accelerates learning but build a good student-teacher rapport. For ensuring experiential learning and overall personality development, the students are inculcated with communication skills, presentation skills and leadership skills and they are also offered Value-added & Cross disciplinary courses. Students are being provided with visits at premiere institutes/organizations like PGIMER Chandigarh, IDSP, ICMR Delhi, NCDC, NIHFV for better exposure in the field areas. Equally, the students are motivated to participate in extra-curricular activities of the college for overall personality development.



POST GRADUATE PROGRAMS

Doctor of Medicine (MD)

- Anesthesiology
- Anatomy
- Biochemistry
- Community Medicine
- Dermatology
- General Medicine
- Microbiology
- Pathology
- Pediatrics
- Pharmacology
- Physiology
- Psychiatry
- Respiratory Medicine
- Radio-diagnosis
- Radiation Oncology

Master of Surgery (MS)

- General Surgery
- Obstetrics & Gynecology
- Ophthalmology
- Orthopedics
- Otolaryngology

The admission into various Postgraduate courses is done on the basis of merit/rank of All India PG National Entrance Examination Test (NEET PG) through common counselling, conducted at State level strictly as per National Medical Council guidelines in accordance with Govt. Gazette notifications that appear from time to time.

HIMALAYAN INSTITUTE OF MEDICAL SCIENCES (HIMS)

Students are also given chance to interact with well renowned epidemiologists, researchers, and extremely talented faculty during the course of the study. Students are also made to work in projects of UNDP where they get experience of several hands on & field-based activities.

The University runs several intramural and extramural research projects funded by international, national, and state agencies and works in collaborations with major universities and institutions like Johns Hopkins University, UNDP, AIIMS-New Delhi, AIIMS Bathinda, AIIMS Gorakhpur, AIIMS Manglagiri, PGIMER-Chandigarh, KGMU-Lucknow, IDSP-Jaipur. Students are also given the opportunity to be the part of these projects for achieving the first-hand experience of research, Program manager and evaluation of health programs.

EMPLOYMENT OPPORTUNITIES

With this current prevailing pandemic, Indian Government realised the dire need of epidemiologists all over the country for better management and planning.

After pursuing this course, students can be recruited:

In the government sector, as

i. District epidemiologist

ii. State epidemiologist

iii. Survey Researcher/Health researcher- **WHO, ICMR, CDC, MoHFW, SIHFW** etc.

iv. Program officer- National health programs like **NTEP, NLEP, NTCP, RBSK, NACO, NHM** etc.

v. Field officer in various government programs and organizations such as **WHO, UNICEF, UNDP, PATH** etc.

vi. Clinical epidemiologist/ Public health specialist in hospitals and medical colleges.

vii. Data analyst at **NIMS ICMR, Institute of Applied Statistics** etc.

In the private sector, they can work in:

i. National & International Organizations like WHO, UNDP, UNICEF, ICMR, IDSP, NCDC

ii. Industries

iii. Hospitals

iv. Medical Colleges/Teaching Institutions

v. Clinics/Polyclinics

vi. Short- & Long-term Projects

Epidemiologists can also work as a statistician to find patterns in health-related problems or as a Health care administrator for monitoring and evaluation in any Government as well as private sector.

ELIGIBILITY

Candidate must have Degree in either of the disciplines: Medicine/ AYUSH / Pharmacy / Dentistry / Allied Health Sciences.

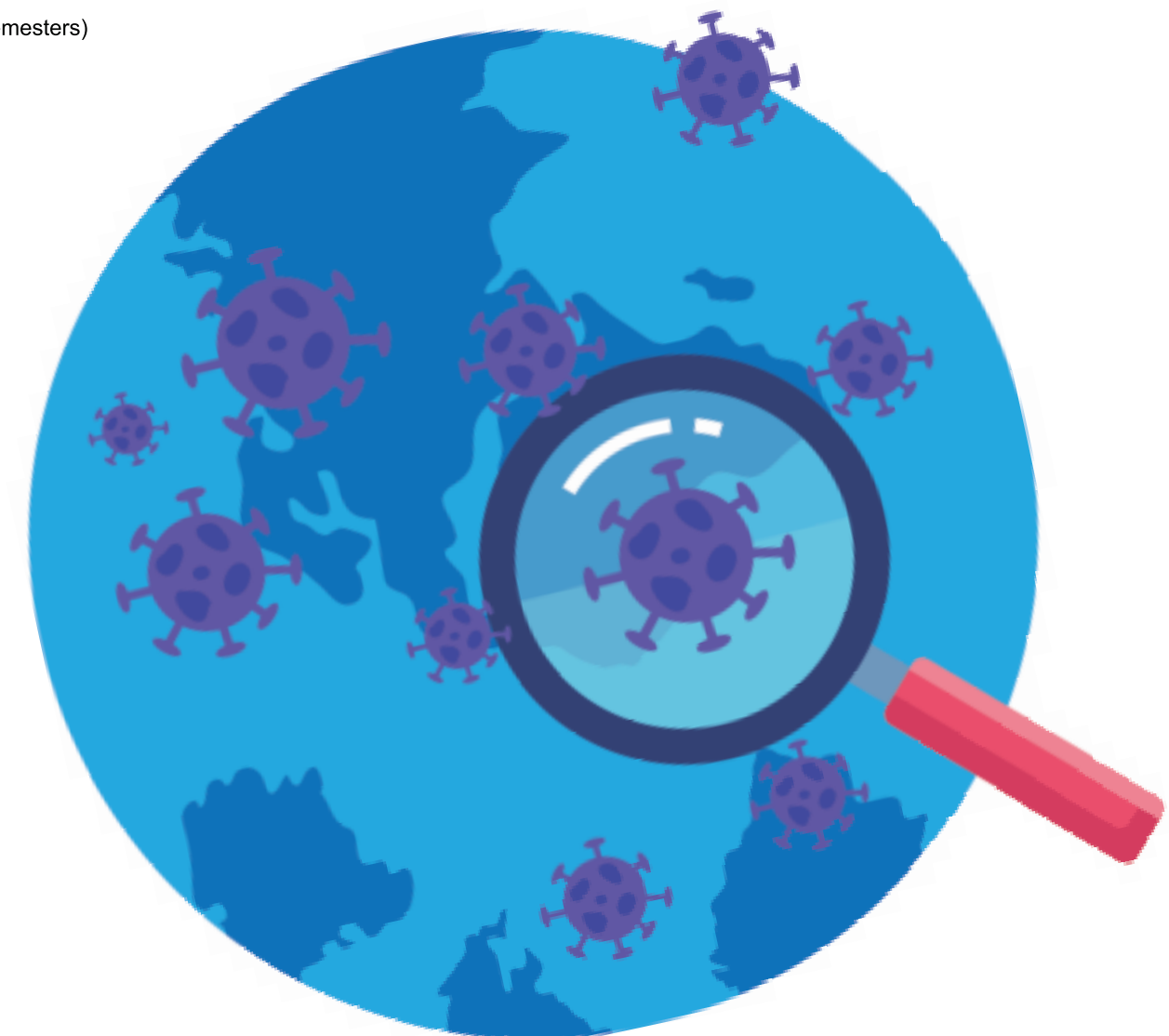
Duration: Two years (4 Semesters)

Number of seats: Fifteen

UNDERGRADUATE DEGREE

Bachelor of Medicine & Bachelor of Surgery (MBBS)

The admission into MBBS course is done on the basis of merit/rank of All India NEET examination through common counselling, conducted at State level strictly as per National Medical Council guidelines in accordance with Govt. Gazette notifications that appear from time to time.



DEPARTMENT OF PARAMEDICAL SCIENCES



The Department of Paramedical Sciences, HIMS, aims to be a Centre of Excellence and deliver high quality teaching-learning in areas of Paramedics. We enable our students to be technical experts and support medical professionals to impart improved healthcare to society.

Our department adopts multi-disciplinary approach and engages students through a wide range of advanced academic activities such as conferences, seminars, special workshops, research based projects, assignments, etc.

Access to 1200 bed teaching hospital, NABL accredited labs, sophisticated operation theatres etc., provide an exposure to students on wide spectrum of diseases and keeps them up-to-date on the latest developments in the field.

We have a highly competent team of faculty with a combination of both clinical & academia, who not only provide theoretical knowledge but also empower students with applied skills such as field postings, patient interactions, training in simulated environments to deal with invasive procedures exposure to critical patients, etc.

With the expanding technological advancement in the healthcare industry, there is an upsurge in demand for skilled paramedical professionals. This has opened career avenues in hospitals, public health laboratories, pharmaceuticals, medical instrument sector and research. Besides, private practice or specialization through fellowship programs in different branches of the related course may be undertaken.

HIGHLIGHTS

- Interactive and integrative learning
- Most concurrent teaching and learning aids
- Constant exposure in frontier areas of Paramedics
- Access to 1200 bed super-specialty hospital
- Sophisticated and advanced laboratories
- Field postings & patient interaction

PARAMEDICAL PROGRAMS

POSTGRADUATE DEGREE

Master of Physiotherapy (MPT)
with specialization in:

- Musculoskeletal
- Neurology
- Cardio Pulmonary & Intensive Care
- Community Based Rehabilitation (CBR)

INTEGRATED DEGREE

Physiotherapy (BPT leading to MPT)

UNDERGRADUATE DEGREE

Bachelor of Science (B.Sc.) in:

- Medical Technology (Laboratory)
- Medical Technology (Radiography and Imaging)
- Medical Technology (Radiotherapy)
- Medical Technology (Operation Theatre)

Bachelor of Optometry (B.Optom.)

Bachelor of Physiotherapy (BPT)

**Bachelor in Audiology and Speech
Language Pathology (BASLP)**

UNDERGRADUATE DIPLOMA

Diploma in Dialysis Technology (DDT)

POSTGRADUATE DEGREE

Master of Physiotherapy (MPT)

The Master of Physiotherapy (MPT) program helps students build their specialization across functional areas viz. neurology, musculoskeletal, cardiopulmonary & intensive care and community based rehabilitation (CBR). The curriculum incorporates group projects, lectures, classroom discussions, training etc. Students receive guidance and mentoring from the competent and experienced faculty. Research is integral to the program.

SPECIALIZATION

Master of Physiotherapy (Musculoskeletal)

Musculoskeletal specialization in physiotherapy focuses on treatment of musculoskeletal system that has been subjected to injury or trauma. This includes sprains, strains, post-fracture, post-surgery & repetitive injuries of neck, back & extremities.

Number of seats: Eleven

Master of Physiotherapy (Neurology)

Neurological Physiotherapy is the treatment of patients who have a neurological disorder. The disorders are those affecting brain, spinal cord & nerves; such as stroke, multiple sclerosis & parkinson's disease etc. This program provides unique opportunities for physiotherapists who wish to develop & extend their knowledge base & professional expertise in the field of neurological rehabilitation.

Number of seats: Eleven

**Master of Physiotherapy
(Cardiopulmonary & Intensive Care)**

Cardiopulmonary & Intensive Care Physiotherapists are involved in helping clinicians to treat Cardiac and Respiratory problems. The course also contains a detailed study of various kinds of action that can be performed on the heart to make it more efficient and healthy in its working.

Number of seats: Six

**Master of Physiotherapy
(Community Based Rehabilitation)**

Community based Rehabilitation program has a strong multidisciplinary influence with an emphasis on current & emerging community rehabilitation and disability theory & practice, social policy, contemporary rehabilitation & human service environment and leadership. Students develop enhanced problem solving skills, high level assessment and intervention skills across individuals, families, groups & communities, practice based research skills and competence in evidence-based practice, as well as capacity for critical reflective practice and leadership development.

Number of seats: Two



DEPARTMENT OF PARAMEDICAL SCIENCES

EMPLOYMENT OPPORTUNITIES

Students can explore employment opportunities in the training institutions in India and abroad, corporate hospitals, rehabilitation centres, polyclinics or get into private practice.

ELIGIBILITY

Candidates must have passed the graduation (BPT) in concerned field from any recognized University and have secured a minimum of 50% marks (aggregate of all four years) in BPT or equivalent qualifying examination.

Duration: Two years

INTEGRATED DEGREE

Physiotherapy

Department of Paramedical offers a six and a half year Integrated Degree Program in Physiotherapy leading to Bachelor of Physiotherapy (BPT) | Master of Physiotherapy (MPT). The program provides a single degree with a provision to exit after four and a half years in which case, the student will be awarded Bachelor of Physiotherapy (BPT) degree. On successful completion of six years and six months, MPT degree will be awarded.

Number of seats: Ten

ELIGIBILITY

The candidate must have passed the 10+2, i.e., C.B.S.E./ I.S.C. Intermediate board examination or its equivalent, with the last two years of such study comprising of Physics, Chemistry, Biology/ Biotechnology/Healthcare Sciences and English from a recognized board.

Minimum of 50% marks in aggregate (for SC/ST/OBC Candidates are minimum of 45%) in Physics, Chemistry, Biology/Biotechnology/Healthcare Sciences taken together & also in total aggregate.

UNDERGRADUATE DEGREE

B.Sc. Medical Technology (Laboratory)

The program aims to provide technical training in laboratory medicine. The students receive an exposure along with hands-on training in the various areas of laboratory medicine such as phlebotomy, clinical biochemistry, hematology, cytopathology, microbiology, immunology, parasitology, serology and blood banking.

The trained technologists are involved in collecting information, sampling, testing, reporting and documenting medical investigations.

Number of seats: Forty Five

B.Sc. Medical Technology (Radiography & Imaging)

This program trains the students to become efficient & knowledgeable radiographers and perform diagnostic tests in medical treatment with the use of radiation. Students will learn the use of ultrasound, X-ray, CT scan, MRI, etc. and receive training in our hospital which is equipped with MRI -1.5 Tesla, Spiral CT - 64 slice, digital subtraction angiography, mammography, ultrasound, color doppler, dexta scan, OPG, mobile X-ray unit, digital and computerized radiography.

Radiographers work as a part of the healthcare team in the diagnostic imaging department, accident & emergency, intensive care unit and operating theatre.

Number of seats: Forty Five

B.Sc. Medical Technology (Radiotherapy)

Program includes basics of anatomy & physiology, radiobiology, clinical radiation therapy including cancer prevention screening & palliative cure in cancer, medical radiation physics and radiation safety. Students are provided with patient-care environment with meaningful communications and problem-solving skills.

Students are trained on different image planning and radiotherapy equipment – CT simulation, mould room, and radiotherapy delivery procedures/techniques by megavoltage machines like linear accelerators dual energy for conventional/3DCRT/IMRT and brachytherapy for cancer treatment, besides quality assurance procedures and networking of radiotherapy images.

Number of seats: Fifteen

B.Sc. Medical Technology (Operation Theatre)

This program equips students to assist in the administration & monitoring of anesthesia and surgery. We provide students with required technical & interpersonal skills and prepare them for managing patients, as well as to monitor the nuances of an operation theatre. The students are trained in areas of surgical procedures, surgical instruments, anesthesia equipment & drugs, patient monitoring and OT ethics.

Students get an opportunity to assist the surgeon in operations and closely look after the drugs, anesthetic gases, drapes & sterilization requirements during surgery. In addition, minor tasks of arranging the operation theatre/ instrument/ anesthesia table and managing the staff prepares the operation theatre technician as a true professional.

Number of seats: Fifteen



Bachelor of Optometry

In this program, students gain an understanding of structure & functioning of the eye. Students learn about prescribing spectacles, contact lenses, low vision devices, etc. Besides, they also help ophthalmologists by learning orthoptics (eye muscle and squint related problems), and handle different instruments like OCT, fundus camera, automated visual field analyser, pachymeter, keratometer, A scan, B scan, NCT, etc independently.

Students are taught by trained retina, cornea and pediatric ophthalmologists. On completion, students can either open their own optical centers or can work as optometrists in an eye hospital. They can opt for higher studies like MSc, PhD in optometry and can take up a career in teaching in optometry schools, or go for fellowships in different branches of eye and become specialists.

Number of seats: Ten



ELIGIBILITY

The candidate must have passed the 10+2, i.e. C.B.S.E./ I.S.C. / Intermediate Board examination or its equivalent, with the last two years of such study comprising of Physics, Chemistry, Biology / Biotechnology / Health Care Sciences and English, from a recognized Board. The candidate must have passed individually and obtained a minimum of 45% (For SC/ST/OBC candidates, 40%) marks in aggregate in Physics, Chemistry and Biology/ Biotechnology / Health Care Sciences, taken together & also in aggregate.

Lateral Entry: Direct admission to second year for all undergraduate courses (**except BASLP course**) subject to availability of seats. Candidates who have passed regular two years Diploma course in respective area with minimum 50% marks in aggregate from any recognized institute are eligible.

Duration: Three years plus Six months internship (Twelve months internship for Bachelor of Optometry)

DEPARTMENT OF PARAMEDICAL SCIENCES

Bachelor of Physiotherapy

Physiotherapy (under Orthopedics) has been in existence in Himalayan Hospital since 1994 as a physical Rehabilitation Department which was later renamed as Physiotherapy, in 1998.

The faculty in the department has vast clinical and academic experience and is further supported by eminent and experienced faculty from Anatomy, Physiology, Biochemistry, Microbiology, Pathology, Pharmacology and Biostatistics which provide students the right platform for practical and theoretical learning.

In order to keep up with the latest trends and skills, the department organizes workshops, CMEs & hands-on training programs by experts from both, within the department and from other premier institutes. We have a well-stocked library where students can gain required knowledge by using facilities both from central as well as the departmental library.

It is noteworthy that students in the department get a unique exposure to variety of patient care under ultra-modern facilities

ELIGIBILITY

The candidate must have passed the 10+2, i.e. C.B.S.E./I.S.C. / Intermediate board examination or its equivalent, with the last two years of such study, Physics, Chemistry, Biology / Biotechnology / Health Care Sciences and English. The candidate must have passed in the subjects as stated above, individually and must have obtained a minimum of 50% (For SC/ST/OBC candidates a minimum of 45%) marks in aggregate in Physics, Chemistry and Biology/ Biotechnology / Health Care Sciences, taken together & also in total aggregate.

Lateral Entry: Direct admission to second year, subject to availability of seats. Candidates who have passed regular two years Diploma course in physiotherapy with minimum 50% marks in aggregate from any recognized institute are eligible.

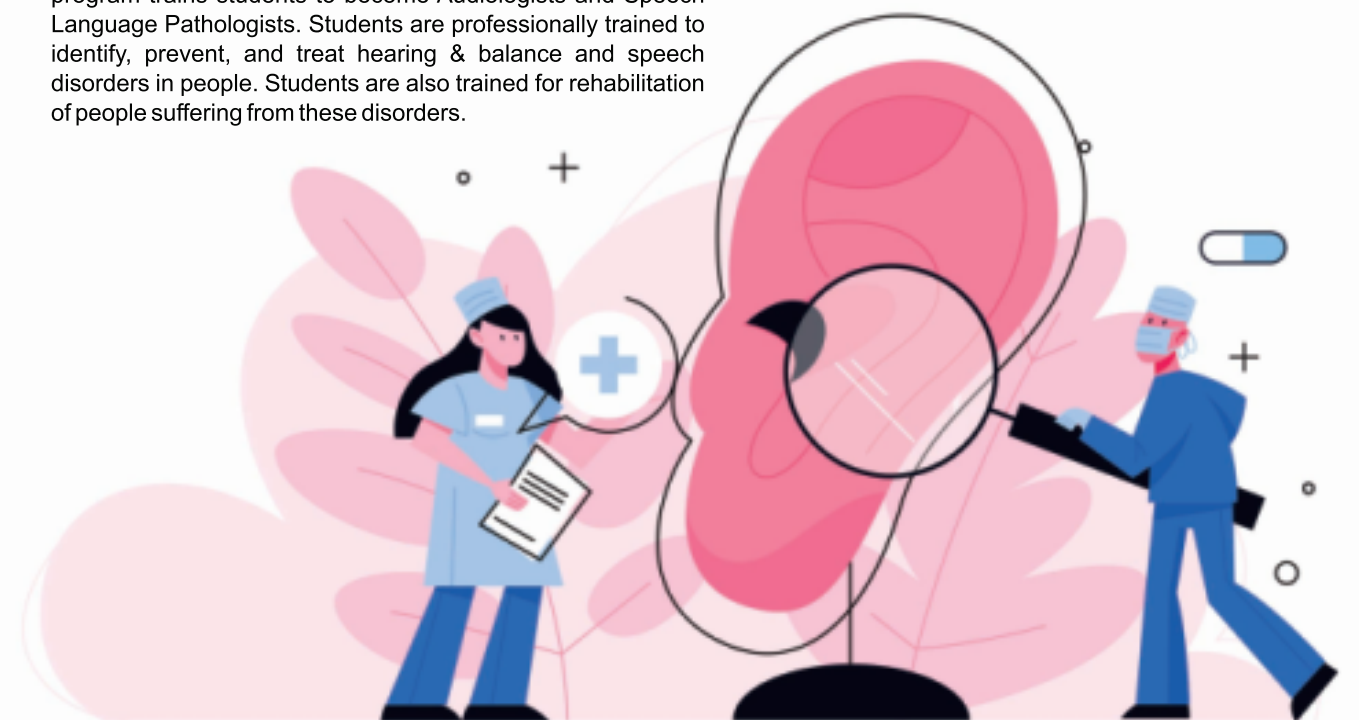
Duration: Four years + Six months internship

Number of seats: Forty

Bachelor in Audiology and Speech Language Pathology

Audiology deals with study of sound, hearing & balance disorders. Speech Language Pathology deals with the study of communication disorders i.e. speech and languages. Recognized by Rehabilitation Council of India (RCI), this program trains students to become Audiologists and Speech Language Pathologists. Students are professionally trained to identify, prevent, and treat hearing & balance and speech disorders in people. Students are also trained for rehabilitation of people suffering from these disorders.

In this program students will learn to set up dialysis machines, prepare sterilization mix, record vital body stats of the patient, monitor & guide and communicate with the patient, besides, administer anesthesia, operate, clean and inspect dialysis machines, supervise dialysis process, calculating blood flow etc.



ELIGIBILITY

The candidate must have passed the 10+2, i.e. C.B.S.E./I.S.C. / Intermediate Board examination or its equivalent comprising of Physics, Chemistry, Biology / Biotechnology / Health Care Sciences/ Mathematics and English from a recognized Board. The candidate must have passed in the above mentioned subjects individually and must have obtained a minimum of 50% (For SC/ST/OBC candidates a minimum of 45%) marks in aggregate in Physics, Chemistry and Biology/ Biotechnology/Health Care Sciences/ Mathematics, taken together & also in total aggregate.

Duration: 3 years (6 semesters) + 12 months compulsory rotatory internship training

Number of seats: Twenty

ELIGIBILITY

The candidate must have passed the 10+2, i.e. C.B.S.E./I.S.C. / Intermediate board examination or its equivalent, after a period of 12 years of study, the last two years of such study, comprising of Physics, Chemistry, Biology / Biotechnology / Health Care Sciences and English from a recognized Board.

The candidate must have passed in the subjects as stated above, individually and must have obtained a minimum of 45% for the course (For SC/ST/OBC candidates a minimum of exact 40%) marks in aggregate in Physics, Chemistry and Biology / Biotechnology / Health Care Sciences, taken together & also in total aggregate OR candidate has qualified Auxiliary Nurse Midwifery (ANM) course.

Duration: One year + Twelve months internship/hands on training

Number of seats: Ten

UNDERGRADUATE DIPLOMA

Diploma in Dialysis Technology

In a healthy human body, kidneys are responsible for purifying the blood. Due to reasons such as kidney failure body becomes unable to carry out this purification process. This is when dialysis process becomes necessary.

NOTE: (Common for all Paramedical Undergraduate Programs): Admission will be made as per the Merit List prepared on the basis of marks secured in the qualifying entrance examination i.e. Common Entrance Examination for Nursing and Paramedical (CEENP). The minimum age is 17 years (complete on 31st December of the year of admission) and maximum is 27 years. Please visit www.srhu.edu.in for details on entrance examination.

DEPARTMENT OF BIO SCIENCES

The Department of Bio Sciences that has a strong commitment to translational research, impact and industrial application with substantial portfolio of enterprise, activity and expertise was established with an objective to deliver high quality education and training in advanced areas of Life Sciences.

The department is a Centre of Excellence which delivers high quality teaching-learning experience in frontier areas of Biosciences. It aims to develop a holistic view for the generation of quality human resources. The students imbibe creative ability, technical skills & skillful research acumen which stimulate their minds to become independent learners and carry out high quality research in the area of interdisciplinary sciences.

With adoption of multi-disciplinary approach, the department is endowed with basic and applied teaching & research facilities as per the existing and future requirement of the Global market.

The department has a wide range of progressive & professionally recognized academic activities including lectures, inter-disciplinary programs, projects, group activities, guest speakers, and one-on-one discussion, with use of multimedia. External exposure include conferences, seminars, special workshops, research based projects, assignments/ field projects, and practical work.



The department has a highly competent team of faculty with a combination of both industry and academia, all having doctoral degrees. Cutting edge technology, including sophisticated computer labs with relevant software keeps the students abreast of the latest developments in the field.

The students passing out of Bio Sciences programs can find jobs in the areas of research or industry viz. pharmaceutical, biochemical, food, dairy, agriculture, etc.



HIGHLIGHTS

- Consistent exposure in frontier areas of applied Biosciences
- Interactive and integrative learning
- Sophisticated and advanced instrumentation facility
- Most Concurrent Teaching and Learning Aids
- 100% Summer Training Assignments
- Mentorship and Personality Development Programs
- Choice Based Credit System (CBCS) of education

BIO SCIENCE PROGRAMS

POSTGRADUATE DEGREE

Master of Science (M.Sc.) in:

- Microbiology
- Biotechnology
- Biochemistry

UNDERGRADUATE DEGREE

Bachelor of Science [B.Sc. (Hons.)] in:

- Microbiology
- Biotechnology

Our students will acquire skills in monitoring, identifying and helping to control infectious diseases, using molecular biology techniques to develop and test new medicines and treatments.

The department has strong faculty with varied expertise and training in terms of Doctoral & Post-doctoral work experience. The emphasis on practical training of the students make them professionally more competent so they may compete successfully at national or international level.



POSTGRADUATE DEGREE

Master of Science (M.Sc.) Microbiology

Microbiology, the science that deals with the tiny creatures invisible to naked eye is considered to be the mother and microorganisms as the backbone for research in all biological sciences including biochemistry, genetics, evolution, biotechnology, genetic engineering, molecular biology and pharmaceutical sciences.

Expertise in microbiology will enable students to exploit technology and help them to explore groundbreaking ideas in the fields of genetics, molecular biology, protein science, biophysics and computational biology. In this program, the students will be continually exposed to advanced instrumentation & techniques in state-of-the-art labs.

Student engagement includes seminars, workshops, expert lectures and summer trainings in the field of molecular diagnostics. Our program includes six months research work whereby a student is required to work on a project under the supervision of a faculty member and submit report on the research conducted. The specialization in the third semester in three areas i.e. medical microbiology, environmental microbiology & industrial microbiology is an added asset to our program.

EMPLOYMENT OPPORTUNITIES

Microbiology has a wide scope because of its involvement in various fields such as pharmacy, medicine, clinical research, agriculture, food, nanotechnology, and biochemical technology. Students may thus pursue careers in various industries/ sectors such as cosmetics & toiletries, food & beverage production, pharmaceutical industries, hotel industry, Government legal bodies i.e. public health, grant management, military, research & development etc.

Jobs can be found such as Quality Control Officers, Quality Assurance Officers (Microbiology), Safety Officers, Healthcare Officers, Scientists, Academicians, Journal Editorial Staff/ Science Writers, post-doctoral fellowships.

ELIGIBILITY

Candidate must be B.Sc. (Botany, Zoology and Chemistry) or B.Sc. (Microbiology / Medical Microbiology / Biotechnology / Genetics / Industrial Microbiology) or B.Sc. MLT (Pathology) with minimum 50% as aggregate.

Duration: Two years (4 semesters)

DEPARTMENT OF BIO SCIENCES

Master of Science (M.Sc.) Biotechnology

Biotechnology is a priori an interdisciplinary pursuit. It may rightly be regarded as a major offshoot of Biochemistry with foundations in many fields including microbiology, molecular biology, genetics, chemistry, biophysics, chemical & biochemical engineering.

In this program we provide graduate students with opportunity to enhance their knowledge in a selected branch or specialty of biotechnology - an interdisciplinary field combining biological sciences and engineering technologies.

In our program, the students will have access to advanced instrumentation & techniques in modern laboratories, besides, an opportunity to participate in seminars, workshops, expert lectures and summer trainings. Six months' research work under the supervision of a faculty is integral to our curriculum.

Students will acquire skills in developing micro-organisms and plants to clean polluted land or water, creating cleaner industrial activities by replacing chemicals with biological process, cloning & producing enzymes for use in manufacturing food & drinks, genetically modifying crops to increase productivity, etc.

Students can obtain specialization in animal biotechnology & cancer, plant biotechnology, environmental biotechnology & industrial biotechnology, or bioprocess engineering.

The faculty, rich in experience and training in the area of fermentation technology & bioprocess engineering, environmental biotechnology, plant biotechnology, animal biotechnology and cancer biology from the premier institutions of the country, is an added advantage.

EMPLOYMENT OPPORTUNITIES

A bio-technologist may find jobs in Drug and Pharmaceutical research, Public funded laboratories, Chemical research, Environment control, Waste management, Food processing, Bio-processing industries, Healthcare etc.

Jobs would be available as a Research Scientist, Executive - Industrial Operations, Medical Coding Professional, Scientist, Biostatistician, Food/ Industrial / Environmental Biotechnologist, Officers in Government Legal Bodies i.e. Public Health, Grant Management, Defence, etc.

ELIGIBILITY

Candidate must be B.Sc. with 50% Marks in Microbiology / Biotechnology / Biochemistry / Genetics / Botany / Zoology / Chemistry or B.Sc. MLT. (Pathology)

Duration: Two years (4 semesters)



Master of Science (M.Sc.) Biochemistry

Biochemistry is a branch of science which deals with the chemistry of living organisms and that of their biological processes, the chemical combinations and reactions that will take place because of growth, reproduction, metabolism, heredity, structures etc. and functions of enzymes, proteins, carbohydrates, lipids and other metabolic substances.

The primary objective of Master of Science in Biochemistry is to provide the necessary preparation for biochemical careers and to expose students to knowledge that deals with the chemistry of living organisms and their biological processes, chemical combinations and reactions.

Students will be exposed to the advanced instrumentation & techniques in state-of-the-art modern labs of the University. Seminars, workshops, expert lectures and summer trainings are a regular feature. Students undertake six months research oriented project under the supervision of a faculty. The student can benefit from specialization in medical biochemistry & cancer biology, plant & food biochemistry, or biotechnology.

Students will be able to carry out tests on blood, research the causes of diseases and their etiology, improve the quantity of crops, create biological detergents and dyes for the textiles industry, improve animal feed, produce medicines using techniques like cell culture, and genetic modification.

The department has a strong faculty base, from premier institutions of the country, with varied expertise in the area of fermentation technology & bioprocess engineering, environmental biotechnology, plant biotechnology, animal biotechnology and cancer biology.

EMPLOYMENT OPPORTUNITIES

Biochemists can think of working in areas such as medical, agriculture, public health care, forensic environment etc. They can find placements in companies dealing in medical instruments, biotechnology, FMCG, research, chemical manufacturing, health and beauty care, etc. Also they are much in demand in areas of quality control & safety, agriculture & fisheries and diagnostics research & development.

Student can find jobs as Scientist in Research Institutes, Research Scientist/ Quality Control Officer/ Production Executive, etc.

ELIGIBILITY

Candidate must be a B.Sc. or equivalent with minimum 50% marks with chemistry or biochemistry as one of the subjects. B.Sc. (Botany, Zoology and Chemistry) or B.Sc. (Microbiology / Medical Microbiology / Biotechnology / Genetics / Industrial Microbiology) or B.Sc. MLT with minimum 50% as aggregate.

Duration: Two years (4 semesters)

UNDERGRADUATE DEGREE

Bachelor of Science [B.Sc. (Hons.)] Microbiology

The program is designed to develop a broad understanding of fundamental and applied scientific concepts and methods in Microbiology, a science that deals with the tiny creatures invisible to naked eye.

Students will develop skills to investigate, record and analyze data, critically evaluate information, undertake practical laboratory investigation and apply scientific thought.

A Microbiologist is an indispensable member of the team managing the infectious diseases and forms an important part of the healthcare delivery system. Microbiology is also a compulsory part of the industries pertaining to food & beverages, pharmaceuticals, soil & agriculture, environmental pollution, and preparation of fermented products.

EMPLOYMENT OPPORTUNITIES

Microbiologists are employable in Government /agriculture /aquaculture sector, chemical / pharmaceutical firms, research labs, beverage industries, FMCG etc.

Microbiologists may work as Calibration Technician, Research Assistant, Research analyst, Scientific Laboratory Technician, Physician Associate, Food, Industrial or Environmental Microbiologists, Quality Assurance Technologists, Sales or Technical Representative, Medical Technologists etc.

ELIGIBILITY

Candidate must be 12th pass with a minimum aggregate of 50% marks in Physics, Chemistry & Biology.

Duration: Three years (6 semesters)

Bachelor of Science [B.Sc. (Hons.)] Biotechnology

Biotechnology, an offshoot of Biochemistry/ Plant & Animal biology, includes microbiology, molecular biology, genetics, chemistry, biophysics, chemical & biochemical engineering.

The program not only helps develop skills required in the use and application of standard software for Bioinformatics but also enables a graduate student to acquire a range of subject related key skills to carry out independent scientific work/ interdisciplinary research, or venture into entrepreneurship.

Students will also be able to carry out basic instrumentation with respect to DNA, isolation, purification, quantification and analysis. Students will also be able to apply a scientific approach to problems, expertise in laboratory techniques such as cell and tissue culture, microscopy, spectrophotometry etc. can be taken up.

EMPLOYMENT OPPORTUNITIES

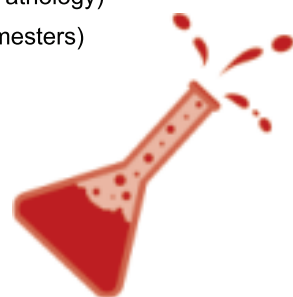
Biotechnology jobs in India can be found in the field of Drug and pharmaceutical research, Public funded laboratories, Chemicals, Environment control, Waste management, Energy, Food processing, Bio-processing industries, Healthcare, Agriculture & Fisheries, Forensic Studies and Bio-farming.

Jobs as Biostatistician, Calibration Technician, Research Assistant, Food Technologist, Food, Industrial or Environmental Biotechnologist, Scientific Laboratory Technician etc.

ELIGIBILITY

Candidate must be 12th pass with a minimum aggregate of 50% marks in Physics, Chemistry & Biology.

Duration: Three years (6 semesters)



DEPARTMENT OF YOGA SCIENCE & HOLISTIC HEALTH



EMPLOYMENT OPPORTUNITIES

Graduates of the Yoga Science & Holistic Health program can teach and spread their knowledge in the villages, schools, colleges, health centers, hospitals, medical sector, commercial companies, AYUSH sector, as well as, open their own Yoga Centers / Yoga Studio for Public Welfare.

ELIGIBILITY

10+2 from any stream with minimum 45% marks in aggregate.

Duration: Three years and 6 months (6+1 semesters; Full time in house internship for Yogic Treatment prospects)

UNDERGRADUATE DEGREE

Bachelor of Science (B.Sc.) in Yoga Science and Holistic Health

The program is designed to develop an in-depth understanding of fundamental and applied scientific concepts and methods of yoga science and allied sciences that deal with the preventive, curative and management aspects of holistic health.

Students will develop skills to investigate health issues & analyze data, critically evaluate information, undertake yoga practicals, laboratory investigation, and apply scientific thought.

Students will develop understanding about traditional knowledge of yoga science in relevance with personal and social life for a healthy and wealthy living along with awareness of social ethics and moral value in the society.

This department has been established with the objective to deliver training in advanced areas of yoga science and holistic health as also high moral values in keeping with the teachings of yoga master HH Swami Rama and ancient Indian Gurus. The main aim is to develop the department as a Center of Excellence in yoga science and deliver high quality teaching-learning matching the needs of the contemporary world of education and health industry. The yoga science at SRHU, intersects with other allied sciences.

The department adopts combined student-centric methodology enabling them to imbibe effectively so as to match with the present-day needs of the society. Students and yoga aspirants are exposed to inter-disciplinary programs & projects, guest key note speakers, lectures group activities, and one-on-one discussion, etc. External exposure includes conferences, seminars, symposia, special yoga workshops and camps, research/evidence based projects & practical work including therapeutic yoga training in SRHU Medical setup with the core team of senior medical faculties.

Department has a highly qualified team of faculty members with a combination of both research and academia; all of them having

higher degrees and certification in the field of Yoga Science from well-known institutions.

The students passing out of Yoga Science and Holistic Health programs can find jobs in the areas of education, training, therapy, research and health industry viz. hospitals, medical sector, AYUSH sector, Indian Embassies, Ministries, and Government NGOs etc.

HIGHLIGHTS

- Well equipped Yoga Practical Lab
- Research and Academic Interface
- Interactive and Integrative Learning
- Choice Based Credit System (CBCS) of Education
- Advanced Learning and Teaching Methodology
- Mentorship and Personality Development Programs
- Program Assignments for Public Welfare
- Educate for Holistic Health & growth
- Higher Training for Yoga Therapy



DEPARTMENT OF HOSPITAL ADMINISTRATION



The healthcare industry has been expanding greatly, and specialized professionals like hospital/ health administrators are crucial to running the operations of healthcare organizations efficiently and effectively.

The Hospital Administration department at SRHU has been established with the aim to enable individuals to develop as leaders by equipping them with both business management and healthcare administration skills, with the objective to deliver high quality teaching-learning to match the needs of the continuing advancements in healthcare industry.

A student-centric methodology is adopted to enhance the learning experience. Students get an exposure to daily practical work in the hospital, inter-disciplinary programs & projects, guest lectures, group activities, discussions etc. External exposure includes healthcare conferences, seminars, workshops, health camps, and field visits to other healthcare facilities.

The department has a qualified team of faculty members with a combination of both research and academia; holding higher degrees in Healthcare/ Hospital administration from well-known institutions.

The Master of Hospital Administration (MHA) students are taught how to deal with economic, social, ethical, political, legal and operational challenges that hospital managers and administrators face in running healthcare facilities. On successful completion of the course, students are capable of dealing with project planning, finance, marketing and operations that are relevant to the healthcare industry.

Job roles are diverse varying from healthcare finance managers, healthcare facility planners, hospital department specific managers, hospital managers/administrators/ directors and healthcare consultants. Opportunities abound in the areas of managing hospitals, healthcare IT, health insurance, healthcare marketing, academics and research, training, healthcare consultation, etc. in public, private or non-government organizations of national or global repute.

HIGHLIGHTS

- 1200 bed hospital for in-campus practical training
- Interactive, Integrative and Experiential learning
- Research and Academic Interface
- Advanced Learning and Teaching Methodology
- Mentorship and Personality Development Programs

POSTGRADUATE DEGREE

Master of Hospital Administration (MHA)

The program aims at developing knowledge and skills on management and administration of healthcare facilities. Students are trained in Hospital Operations, Hospital Policies, Quality Assurance, Public Health, Basic Medical Sciences, Healthcare Marketing and Hospital Information System etc.

This program is designed to give students an exposure to various departments of the Hospital. Students receive training, guidance and mentoring from the competent and practicing faculty in the Himalayan Hospital.

This program prepares you to assume the responsibilities of Executive/ Manager/ Asst. Hospital Administrator/ Administrator in a government, semi-government, corporate or charitable hospital or other healthcare organizations. MHA graduates are capable of dealing with finance, marketing and operations relevant to the healthcare industry.

EMPLOYMENT OPPORTUNITIES

Students will find job opportunities in all kind of Government or Private Healthcare institutions in appointments like Medical and Health Services Managers, Hospital Administrators, Clinic Managers, Hospital Consultants, Healthcare Finance Managers and Coordinators in various hospital departments.

There are vast opportunities in other related businesses such as Health Insurance companies, Hospital Consulting firms, Medical Software companies, in global health organizations or NGOs working in the healthcare sector.

ELIGIBILITY

Candidate must at least be a Graduate in Bachelor of Medicine & Bachelor of Surgery (MBBS), Bachelor of Dental Surgery (BDS), Bachelor of Ayurvedic Medicine & Surgery (BAMS), Bachelor of Homeopathic Medicine & Surgery (BHMS), Bachelor of Science (B.Sc.) Nursing, Bachelor's degree in any Paramedical courses, Bachelor of Pharmacy (B. Pharm), B.Sc. (H) in Microbiology/ Biochemistry/ Biotechnology from a recognized university with an aggregate of minimum 50% marks.

Duration: Two Years (4 semesters)



HIMALAYAN COLLEGE OF NURSING (HCN)

Himalayan College of Nursing (HCN), a premier nursing institute, aims to achieve excellence in nursing education, practice and research that meets national and international standards. The programs run by HCN are designed to keep pace with the ever changing healthcare industry & its environment, where healthcare is envisioned as an integrated three dimensional model - education, research and service.

Courses being conducted under the institution prepare nurses to be expert clinicians at the bedside and for initial preparation in nursing education and administration. We prepare the students to assume leadership roles in nursing clinical practice, administration, teaching and research.

The college offers diverse resources for the mind, body & soul and enough flexibility for students to explore in their own distinctive way. Soft skill trainings comprise of reading, writing, listening and speaking. Besides, students are provided with ample opportunities to exhibit their talents in co-curricular and extracurricular activities. In addition, team spirit, leadership quality, time management and decision making skills are also given focused attention for overall personality development of students.

We have a highly competent team of experienced & dedicated faculty from reputed nursing colleges and universities who render quality education to undergraduate and postgraduate students assisting them in developing expertise and in-depth understanding of the nursing field.

Graduates and Post graduates of HCN are given placements in associated Himalayan Hospital, subject to vacancies, besides, the students passing out of these programs are eligible to serve in various organizations viz. colleges, hospitals (domestic & overseas), defense services & institutes. Past students recruited by government health sectors are working both in India & abroad.



HIGHLIGHTS

- Competent, experienced & dedicated faculty
- Holistic approach to curriculum i.e. mind, body, breath and soul
- Trained to be expert clinicians at the bedside
- Soft skill trainings in communication, time management, decision making skills etc.
- Excellent placement record of nurses

NURSING PROGRAMS

POSTGRADUATE DEGREE

Master of Science (M.Sc.) Nursing with specialization in:

- Child Health Nursing
- Community Health Nursing
- Medical Surgical Nursing
- Mental Health Nursing
- Obstetric & Gynaecological Nursing

Master of Science (M.Sc.) Nursing - Nurse Practitioner in Critical Care

UNDERGRADUATE DEGREE

- Basic Bachelor of Science (B.Sc.) Nursing
- Post Basic Bachelor of Science (P.B.B.Sc.) Nursing

POST GRADUATE DEGREE

Master of Science (M.Sc.) Nursing

The Master of Science in Nursing (M.Sc. Nursing) is considered to be an advanced degree that focusses on various specialty areas, and is a pre-requisite for doctoral-level nursing education. M.Sc. in Nursing will equip B.Sc. Nurses and Post Basic B.Sc. Nurses to become advanced clinicians, evidence-based researchers, skilled administrators, and



HIMALAYAN COLLEGE OF NURSING (HCN)

creative teachers, using innovative methodologies in nursing education, nursing practice and nursing research. The program helps students build their specialization across nursing areas viz. child health nursing, community health nursing, medical surgical nursing, mental health nursing and obstetric & gynaecological nursing.

SPECIALIZATION

Child Health Nursing

This course is designed to assist students in developing expertise and in-depth understanding in the field of Paediatric Nursing. It will help students to appreciate the child as a complete individual and develop skills to function as neonatal & paediatric nurse specialist.

At the end of the course the students will be able to apply the concepts of growth & development in providing care to the paediatric clients, recognize & manage emergencies in neonates, incorporate evidence based nursing practice and identify the areas of research in the field of paediatric / neonatal nursing, etc.

This specialization will aid the student to be paediatric nursing educator, manager and researcher.

Number of seats: Five

Community Health Nursing

The course will enable students to develop expertise and comprehensive understanding in the field of Community Health Nursing. It would help students to appreciate holistic life style of individual, families, groups and develop skills to function as community health nursing specialist/practitioner.

Students specializing in this program will be able to put in practice the concepts of preventive, curative & rehabilitative aspects of health while providing care to the people, recognize & participate in the management of emergencies, epidemics & disasters, participate in planning, implementation & evaluation of various national health and family welfare programs at local, state and national level, etc.

This specialty would facilitate the students to function as an educationalist, manager and researcher in the field of community health and community health nursing facilities.

Number of seats: Five

Medical Surgical Nursing

This course is common for the students undergoing clinical specialty-II in neuroscience / cardiovascular & thoracic / critical care / oncology / orthopaedic & rehabilitation / nephrology & urology / gastroenterology and geriatric nursing.

The program is designed to assist students in developing expertise and in depth knowledge in Medical Surgical Nursing.

Students specializing in Medical Surgical Nursing will be able to prepare a design for layout & management of Medical-Surgical units, perform physical, psychosocial assessment of patients with



Medical-Surgical conditions, describe various recent technologies & treatment modalities in the management of patients.

In addition, it will train students to function as a specialized Medical-Surgical nurse, besides taking up the roles of teacher, administrator and researcher in the field of Medical-Surgical Nursing.

Number of seats: Five

Mental Health Nursing

The course will make students proficient in developing capability and in depth understanding in the field of Psychiatric Nursing. It will help students to appreciate the trends and issues in the field of psychiatrics & psychiatric nursing.

Students undertaking this course will be able to describe the concepts of psychobiology in mental disorders and its implications for psychiatric nursing, demonstrate therapeutic communications skills in all interactions, promote self-esteem of clients, others and self, etc.

Students can further advance their expertise through research and/or build careers in education / healthcare industry etc.

Number of seats: Five

Obstetrics & Gynaecological Nursing

This course will empower students with expertise and in-depth understanding of Obstetric & Gynaecological Nursing and function as an independent midwifery practitioner.

On the completion of this course, student will be able to describe the concepts of biophysical, psychological & spiritual aspects of normal pregnancy, labor and puerperium, provide comprehensive nursing care to women during reproductive period, identify and analyze the deviations from normal birth process & refer appropriately. They will also be able to counsel adolescents, women and families on issues pertaining to pregnancy, child birth & lactation, etc.

Additionally, students are aided to function as educator, manager and researcher in the field of Obstetric and Gynaecological nursing

Number of seats: Five

ELIGIBILITY

The candidate should be a Registered Nurse and Registered Midwife or equivalent with any State Nursing Registration Council, possess Basic B.Sc. Nursing / B.Sc. (Hons.) Nursing / Post Basic B.Sc. Nursing degree (Regular or from recognized IGNOU centres) with minimum of 55% aggregate marks from an institution recognized by Indian Nursing Council and minimum one year work experience after Basic B.Sc. Nursing or prior or after Post Basic B.Sc. Nursing in clinical / public health / teaching from an INC recognized institution (s).

Duration: Two years

Master of Science (M.Sc.) Nursing - Nurse Practitioner in Critical Care

The program is a post graduate residency program in Critical Care Nursing with main focus on competency based training. The curriculum consists of theory with core courses, advanced practice courses and clinical courses, as well as clinical practicum as its major components.

This program prepares registered B.Sc. & Post Basic B.Sc. nurses for advanced practice roles as nurse managers, nurse educators, nurse consultants and nurse clinical practitioners in critical areas of tertiary care hospitals i.e. Intensive Care Unit, Neonatal Intensive Care Unit, Cardiac Care Unit, Operation Theatre, Emergency, Dialysis Unit etc.

Number of seats: Fifteen

ELIGIBILITY

Candidate should possess a B.Sc. Nursing / Post Basic B.Sc. Nursing degree with 55% aggregate marks & must be a registered nurse with a minimum of one year clinical experience, preferably in any critical care setting prior to enrollment. Selection will be based on merit of Entrance Examination & Interview.

Duration: Two years

Number of seats: Fifteen

Note: Monthly stipend will be paid to the admitted candidates pursuing M.Sc. Nursing (NPCC) as per norms of the University.



HIMALAYAN COLLEGE OF NURSING (HCN)



UNDERGRADUATE DEGREE

Basic Bachelor of Science (B.Sc.) Nursing

This program prepares students to be expert clinical nurses at the bedside in addition to initial preparation in nursing education and nursing administration. The curriculum includes training in a broad spectrum of scientific, critical-thinking, humanistic, communication, and leadership skills. These abilities are essential for today's professional nursing where nurses are expected to perform as skilled provider, manager and coordinator of care.

The program also enables the student to assume leadership roles in nursing clinical practice, administration, teaching and research.

ELIGIBILITY

The candidate must have passed the 10+2, i.e. C.B.S.E. / I.S.C. / Intermediate Board examination or its equivalent, after a period of 12 years of study, with Physics, Chemistry, Biology and English individually from a recognized Board and must have obtained a minimum of exact 45% marks in aggregate in Physics, Chemistry and Biology taken together.

For SC/ST/OBC- A minimum of exact 40% marks in aggregate in Physics, Chemistry and Biology taken together.

Age: The minimum age for admission shall be 17 years on or before 31st December of the admission year.

Duration: Four years

Number of seats: One Hundred

NOTE: Selection will be based on merit list of Entrance Examination to be conducted by the University.

Post Basic Bachelor of Science (P.B.B.Sc.) Nursing

We recognize that nurses must continue to be challenged educationally & clinically in order to meet the rigors of a highly complex and diverse profession. This course enables working nurses with a diploma in nursing to complete a Graduation in Nursing. The course enables GNM nurses to advance their education, improve nursing skills and equip themselves for larger and more fulfilling roles in their profession.

ELIGIBILITY

The candidate must have passed in GNM from an institution, which is recognized by Indian Nursing Council, with 50% aggregate marks and should be registered in Parent Nursing Council.

Duration: Two years

Number of seats: Forty



HIMALAYAN SCHOOL OF VOCATIONAL STUDIES AND SKILL DEVELOPMENT (HSVSSD)



The clear intent of Himalayan School of Vocational Studies and Skill Development (HSVSSD) is to empower youths to earn their rightful place in the world - through skills!

India's economy is amongst the fastest growing in the world. As a result, the requirement for a skilled workforce is increasing day by day. But there is an acute shortage of such (skilled) manpower in most sectors which acts as a hurdle to the country's development.

To bridge the gap in demand & supply for skilled workforce, the Central and State Governments are encouraging a series of skill training programs through National Skill Development Corporation (NSDC) under Ministry of Skill Development and Entrepreneurship (MSDE) with the help of various agencies, MNCs, and private & public sector.

HSVSSD at SRHU endeavors to contribute to this initiative by offering short-term courses and diploma programs. In order to impart quality education & training to youngsters, several professionals are associated in the teaching/ instruction.

VOCATIONAL PROGRAMS

UNDERGRADUATE DEGREE

Bachelor of Vocation (B.Voc.) in:

- Culinary Management
- Software Development

UNDERGRADUATE CERTIFICATE

**Prime Minister Kaushal Vikas Yojna (PMKVY)
Suryamitra Skill Development Program
Generation India Project: Social Initiative of McKinsey & Company**

UNDERGRADUATE DEGREE

Bachelor of Vocation (B.Voc.)

Swami Rama Himalayan University (**SRHU-Academic Partner**), Learnet Skills Limited (**Skill Knowledge Partner**), Tourism & Hospitality Skills Council (**THSC-Sector Skill Council**) and Inter-Continental Hotels Group (**IHG-Crown Plaza, Industry Partner**) have come together to offer a unique three year degree program in hotel management with specialization in Culinary Management.

B.Voc. offers you to learn job aligned skills for the hospitality industry (60%) along with general education (40%) and its curriculum is designed in consultation with experts of hospitality industry, senior academicians and Tourism & Hospitality Skills Council (THSC) with new B.Voc guidelines of UGC.

The program structure is focused on undergraduate studies which incorporates specific job roles and their National Occupational Standards (NOS) as per National Skill Qualification Framework (NSQF) - a competency-based framework that organizes Qualifications according to a series of levels of knowledge, skills and aptitude along with broad general education.

This program offers a unique opportunity to earn while you learn though 20-24 months of paid On-Job-Training with Inter-Continental Hotels Group. OJT would enable to garner real time industry experience and would be calculated as credit hours for award of degree. This would also be counted as work experience in candidates' resume and ultimately increase chances of better employment and salary offerings, thus assisting the candidate during placements.



SPECIALIZATION

Culinary Management

Culinary Management students learn to practice and implement basic and advanced food theories to all aspects of food production and develop skills to work in the world's best kitchens giving them exposure to chefs and industry leaders. Students are equipped with the necessary job-oriented skills for success as a culinary professional in all sectors of the food service industry. Students focus on professionalism, culinary and business skills, safety and sanitation, nutrition, product knowledge and identification.

Award of Degree and Skill Certification

On successful completion candidates will earn a graduate degree from SRHU (recognized by UGC) and Skill certifications from Tourism & Hospitality Skill Council, an industry body under National Skill Development Corporation.

EMPLOYMENT OPPORTUNITIES

The knowledge and skills gained in this program are relevant for a variety of food-related industries and sectors. Graduates may find employment in food preparation and service establishments, such as hotels, restaurants, resorts, cafeterias, senior care facilities, catering companies etc.

Sector Skill Council Certification (Culinary Management)

- Multi Cuisine Chef (NSQF level 4)
- Commi-I (NSQF level 5)
- Chef De Parte (NSQF level 6)
- Sous Chef (NSQF level 7)

ELIGIBILITY

Candidate must have passed 10+2 (Class XII) or its equivalent examination with a minimum of 45% aggregate marks in any stream. Relaxation of 5% in aggregate percentage of marks will be given to the candidates who belong to SC/ST & OBC

Duration: Three years (6 semesters)

Software Development

B.Voc. in Software Development is a three-year degree program recognized by the UGC, Government of India, and All India Council for Technical Education (AICTE). The program is structured based on a Choice-based Skill framework approved by UGC, NSDC (National Skill Development Corporation), and NASSCOM (National Association of Software and Services Companies), Sector Skill Council IT-ITes.

On successful completion, candidates will earn a **Graduate Degree** from **SRHU** (recognized by UGC) and **Skill Certifications** as per job roles & **NSQF Level** designated by **NASSCOM, Sector Skill Council, IT-ITes**, an industry body under National Skill Development Corporation. Award of levels are as below

Academic Year	Semester	NSQF Level Certification by the SSC	Qualification Pack Code	Job Role/Qualification Pack Name	Awards by the University
First	I	NSQF Level-4	SSC/Q0508	Junior Software Developer (JSD)	Vocational Certificate
	II	NSQF Level-5	SSC/Q0503	Web Developer	Vocational Diploma
Second	III	NSQF Level- 6	SSC/Q0509	Master Trainer for JSD	Vocational Advanced Diploma
	IV				
Third	V	NSQF Level- 7	SSC/Q0501	Software Developer	Bachelor of Vocation Degree
	VI				

EMPLOYMENT OPPORTUNITIES

The degree holders will find job opportunities in public and private organizations in positions like Application Developer, Graphic Designer, Website Developer, User Interface Developer, Programmer, Software Tester, Software Analyst, Coder, Algorithm Designer, UI designer, etc.

Brief Job Description

Individuals at this job are responsible for development of software applications and interfaces as well as enhancements to existing packaged applications or pre-engineered templates. The job also involves providing support to custom applications, debugging, maintenance and documentation.

ELIGIBILITY

Candidate must have passed 10+2 in any discipline or equivalent from a recognized Board with an aggregate of minimum 45% marks.

Number of seats: Thirty

HIMALAYAN SCHOOL OF VOCATIONAL STUDIES AND SKILL

DEVELOPMENT (HSVSSD)

UNDERGRADUATE CERTIFICATE

Prime Minister Kaushal Vikas Yojna (PMKVY)

The Training imparted at the SRHU center benefits candidates who are either school/college dropouts or otherwise unemployed.

Presently, training imparted covers Banking, Financial services and Insurance (BFSI), Apparel, Made ups & Home Furnishing, Telecom and Healthcare industries. After the certification, students can get employment as GST Accounts Assistant, Sewing Machine Operator, Customer Care Executive – (Telecom Call Centre) and General Duty Assistant

In addition, the center also imparts training in Soft Skills, Entrepreneurship, Financial and Digital Literacy. Placement assistance is provided on successful completion of the assessment.

Suryamitra Skill Development

This program sponsored by the Ministry of New and Renewable Energy (MNRE), aims to develop the skills of youth considering employment opportunities in the Solar Energy Power Projects (including installation, operation & maintenance).

The program is fully residential and is provided free of cost, including boarding and lodging.

During first two months of the Suryamitra program, students make at least three visits to medium / large industry and one visit to 33 KV substations to further improve their knowledge and understanding on power transmission, distribution, loads, cabling etc.

The students will get to know the basics of Electricity & Solar Electricity, operate & maintain Solar Systems, plan & install Solar PV Electrical System, test and commission Solar plants, check all equipment and parts for safety, etc.

EMPLOYMENT OPPORTUNITIES

Institute will assist in the placement of the “Suryamitras” by inviting solar industries, EPC companies, marketing companies, large contractors working with Transco, Discoms etc. A large number of students would be provided employment at the end of the program.

ELIGIBILITY

Candidate in the age group of 18-35 years, must have passed 10th and hold an ITI in Electrician/Wireman/Electronics OR hold a Diploma in Electrical, Mechanical or Electronics.

Duration: The duration of the program is 600 hours (approximately 90 days)

Number of seats: Presently, 30 seats for each batch.

(Note: The Engineering Graduates and persons with other higher qualification are not eligible to apply)



GENERATION PROGRAM: SOCIAL INITIATIVE OF MCKINSEY & COMPANY

This program, addresses the need for sustainable youth employment through an innovative, replicable, rapidly scalable employment model with a measurable return on investment for employers and youth.

SRHU-Learnnet Skills Limited together with McKinsey & Company aims to impart employability-linked skills training to youth, thereby meeting the growing requirement for a skilled workforce in the healthcare, hospitality and retail sectors.

Currently institute is offering 7 weeks residential Food & Beverage services Steward Certification program.

HIGHLIGHTS

- Industry-standard machinery and simulated labs are installed in the training centers to provide hands-on experience to the trainees.
- Centre conducts end-to-end vocational training, in addition to imparting domain-specific skills, additional modules to train candidates in Soft skills, IT and life skills, to help them succeed in the workplace.
- The project contributes towards the national agenda of Skill Mission through the social and economic empowerment of the youth.

EMPLOYMENT OPPORTUNITIES

The knowledge and skills gained in this program help carve a career in the field of food & beverage and hospitality sector such as hotels, restaurants, resorts, casinos, amusement parks, cruise ships, cafeterias, senior care facilities or catering companies.

Some of the recent recruiters are Taj City Center, Atrium, Mango Blossom, Nandos, Hotel Galaxy, Four Points by Sheraton etc.

ELIGIBILITY

Candidate in the age group of 18-27 years and not currently in full time employment. Candidate must have passed 10th in any stream.

Duration: 49 days residential program.

Number of seats: Presently, 30 seats for each batch for each training cycle.



RESEARCH

SRHU is a research oriented university comprising a unique platform for interdisciplinary research bringing Science to Medicine, Bench to Bedside, Technology to Production, and Management to Business. With its cross-disciplinary strengths, access to frontline instrumentation and enormous data bases at the fully fledged hospital, it has the potential to test and clinically validate ideas/products being generated globally.

Our vision is to be recognized as an institute of international repute in varied areas of research. This will be achieved by enhancing scientific knowledge through research and applied to scientific & societal challenges. Our endeavor is to build on the Institute's extensive data, information and service to support science, policy development, decision-making and the translation of research into practice.

All schools and institutes are actively engaged in research with several departments publishing research papers/articles/reviews in indexed journals, besides, many published books/book chapters. Since the inception of SRHU, our faculty has published over 1164 papers in peer reviewed journals.

University has 29 sanctioned extramural projects out of which 20 are completed. 9 extramural projects are still underway on which the faculty is working with scholarly approach and perseverance. University has 282 sanctioned intramural projects, 162 projects are complete with 118 still ongoing.

The frontline laboratories are NABL accredited. Our University is Scientific and Industrial Research Organization (SIRO) recognized by Department of Scientific and Industrial Research (DSIR), Ministry of Science and Technology, Government of India. We have also established an IPR cell sanctioned by UCOST to facilitate all the researchers to come on a common platform and avail the facility with an aim to foster an environment of creativity and innovation.

The IPR cell has organized three workshops related to intellectual property rights, Patent filing process, IP Management, Overview of IPR in Indian scenario for Medicos, Academicians, Technocrats and Research Scholars. In the University total number of registered P.h.D. scholars are 77 and 4 P.h.D. scholars have been awarded the Ph.D. degree

Clinical investigations focus on elucidating basis of disease, translational research & applications that lead to improvised treatment and patient care. Fundamentally the researches are disease-derived, patient-derived. Furthermore, HR, Marketing & Finance focus on business and industry.

The intramural and extramural grants supports, translational research projects of faculty and students. At present University has extramural funding from ICMR, UCOST, CSIR, UCB, Mitra Biotech, USAC, IAS. The departments also attract considerable extramural research projects from various funding agencies viz. DST, AERB, Sir Dorabji Tata Trust, Mumbai, Board of Research in Nuclear Sciences etc.

To further advance research, the University has collaborated with various national and international Universities/Institutions/Hospitals for collaborative and cross-disciplinary research.

To increase scientific publishing across the Institute, University has launched its in-house Journal both, online with ISSN No. 2456-7825 and print version (ISSN No. awaited) "Swami Rama Himalayan University Journal of Medical Sciences", the print version of this journal is registered with the registrar office of Newspapers for India, with RNI No. UTTENG/2017/75035.

Our departments constantly conduct seminars, symposia, hands-on workshops and training programs in various research areas including research methodology imparting statistical and computer based skills. We are proud to have held 3rd international conference on Nutraceuticals and Chronic Diseases at our University.



ELIGIBILITY

Candidates for admission to the Ph.D. program should have a Master's degree or a professional degree declared equivalent to the Master's degree by the corresponding statutory regulatory body, with at least 55% marks in aggregate or its equivalent grade 'B' in the UGC 7 point scale (or an equivalent grade in a point scale wherever grading system is followed). A relaxation of 5% marks, from 55% to 50%, or an equivalent relaxation of grade, may be allowed for those belonging SC/ST/OBC.

Duration: Ph.D. programme shall be in **regular mode** for a minimum duration of three years (including course work), and a maximum of six years.

ADMISSION PROCEDURE

Ph.D. Entrance Examination shall be conducted twice a year by the University. All candidates shall be required to appear in the Entrance Examination. However, candidates who have qualified in the UGC-NET (including JRF)/UGC-CSIR NET (including JRF)/SLET /GATE/teacher fellowship holder or have passed M.Phil programme shall be exempted from appearing in the Entrance Examination. Such candidates are required to obtain 50% marks in the personal interaction and interview to qualify for admission to the Ph.D. program. (The UGC/CSIR NET/SLET/GATE/GPAT/M.Phil. etc. certificate shall be valid till three (3) years from the date of declaration of the result or issue of certificates.). To pass the entrance examination a candidate must secure 50% marks.

After declaration of the result of entrance exam, the qualified candidates will be called for personal interaction and interview to discuss research interest/area. In the final merit list a weightage of 70% to the entrance test and 30% to the performance in the personal interaction and interview shall be given

UNIVERSITY OFFERS Ph.D. PROGRAMS IN THE FOLLOWING AREAS:

- Biochemistry
- Biotechnology
- Brain and Mind Sciences
- Epidemiology
- Hospital Administration
- Immunology
- Management (Finance, Human Resource Management, Marketing Management)
- Medical Physics
- Microbiology
- Nursing Sciences
- Oncology Sciences
- Pharmacology
- Physiology



PLACEMENTS



University Training & Placement Cell works with the aim of, on one hand, setting up a network & relationship with industry and on the other supporting student development.

Placement process at SRHU is a culmination of a strong training structure, inclusive of technical & industry oriented training, soft skills & life skills training throughout the year, besides, matching the students' talent, skills and attitude with industry requirements.

Highest Package

₹10 Lakhs p.a.

Our students have consistently been placed and carved a niche for themselves in reputed organizations like TCS, IBM, Infosys, Cognizant, HCL, Byju's, Bajaj Motors, Deloitte, Wipro Technologies, Hitachi Systems, Rubico IT, Axis Bank, Om Logistics, Ozone Overseas Pvt. Ltd, Ernst & Young, Bajaj Finance, Sriram Finance Star Health, MAX Healthcare, FORTIS, Apollo Research & Innovations, Medanta - The Medicity Delhi-NCR, DCDC Kidney care, Sun Pharma, Cadilla, Zydus, to name a few.



ADMISSION PROCESS



SCIENCE & TECHNOLOGY PROGRAMS

POST GRADUATE PROGRAMS

Master of Computer Applications (MCA)

Admission will be made on the basis of marks obtained in Graduation and the Personal Counselling & Interaction, conducted by the University Admission Committee, with the candidate.

Master of Science (M.Sc.) in Statistics with specialization:

- Health Sciences & Analytics
- Actuarial Sciences & Analytics

Selection will be made as per the merit list prepared on the basis of marks secured in the qualifying examination and counselling by the admission committee or as decided by the University, from time to time.

UNDER GRADUATE PROGRAMS

B.Tech. Computer Science & Engineering (CSE) | B.Tech. Computer Science & Engineering (CSE) with IBM Badge in Cloud Computing & Virtualization

Admission shall be based on the merit list prepared on the basis of marks secured in 10+2 (Class XII) examination.

Due weightage shall be given to the candidates with valid JEE/BITSAT score.

Bachelor of Computer Applications (BCA)

Admission will be made on the basis of marks obtained in 10+2 and the Personal Counselling & Interaction conducted by the University Admission Committee, with the candidate.

Bachelor of Science [B.Sc. (Hons.)] in Data Science

Admission is strictly based on the merit list prepared on the basis of marks secured in the qualifying examination or as decided by the University, from time to time.

DIPLOMA PROGRAMS

Civil Engineering / Mechanical Engineering / Electrical Engineering/ Biomedical Engineering

Admission shall be based on the merit list prepared on the basis of marks secured in the qualifying examination. Due weightage shall be given to the candidates with valid JEEP score.

MANAGEMENT PROGRAMS

POST GRADUATE PROGRAMS

Master of Business Administration (MBA)

The candidates are shortlisted on merit basis of the qualifying examination and CAT/ MAT/ GMAT/ CMAT score.

The merit list is displayed & shortlisted candidates are required to attend for Group Discussion and Personal Interview (GD-PI) conducted by the department.

The final selection is made on the basis of GD-PI conducted.

UNDER GRADUATE PROGRAMS

Bachelor of Business Administration (BBA)

Candidates applying for the BBA program will be shortlisted on merit basis of the qualifying examination. The shortlisted candidates will be given personal counselling by the admission committee, before offer for admission to the program.

Bachelor of Commerce [B.Com. (Hons.)]

Candidates applying for the B.Com. (Hons) program will be shortlisted on merit basis of the qualifying examination. The shortlisted candidates will be given personal counselling by the admission committee, before offer for admission to the program.

ADMISSION PROCESS

MEDICAL PROGRAMS FELLOWSHIP

Critical Care Medicine

Admission shall be made on the basis of performance of the candidates in the interview, publication of original research articles, attendance in conference/workshops, work experience & recommendations from their institutes taken together.

POST GRADUATE PROGRAMS

Master of Medicine (MD) / Master of Surgery (MS) / PG Diploma

There is common counselling for admission to MD/MS/Diploma Courses on the basis of merit list of the National Eligibility Entrance Test (NEET) and is done under the overall supervision of State Government.

Admission to MD/MS/PG Diploma Courses is strictly done as per MCI guidelines. Admission, selection, counselling is done as per qualification in terms of gazette notification that appears from time to time.

Master of Science (M.Sc.) Clinical Research / Epidemiology

Based on assessment through personal interview and/or merit of entrance examination conducted by the University.

CERTIFICATE

Applied Nutrition & Dietetics / Epidemiology & Biostatistics

Based on assessment through personal interview.

UNDER GRADUATE PROGRAMS

Bachelor of Medicine and Bachelor in Surgery (MBBS)

Process of admission to undergraduate programs is similar to that of Post Graduate. National Eligibility Entrance Test (NEET) merit list is basis for counselling for admissions into MBBS. All admissions are done under the overall supervision of the State Government.

Admissions into various undergraduate programs in Nursing are made on the basis on marks secured in the Common Entrance Examination for Nursing (CEEN) for which the minimum age is 17 years (complete on 31st December of the year of admission) and maximum is 27 years.

BIO SCIENCES PROGRAMS

POST GRADUATE PROGRAMS

Master of Science (M.Sc.) Biochemistry / Biotechnology / Microbiology

Admission will be made on the basis of marks obtained in Graduation and the Personal Counselling & Interaction, conducted by the Admission Committee of the School, with the candidate.

UNDER GRADUATE PROGRAMS

Bachelor of Science [B.Sc. (Hons.)] Biotechnology / Microbiology

Admission will be made on the basis of marks obtained in 10+2 and the Personal Counselling & Interaction, conducted by the Admission Committee of the School, with the candidate.

YOGA SCIENCE & HOLISTIC HEALTH PROGRAMS

UNDER GRADUATE PROGRAMS

Bachelor of Science (B.Sc.) Yoga Science & Holistic Health

Candidates are shortlisted on the basis of merit and first come first basis. Merit list is displayed and shortlisted candidates are required to attend personal counselling session. Students will be selected on the basis of qualifying testimonials, credentials and medical examination.

HOSPITAL ADMINISTRATION PROGRAMS

POST GRADUATE PROGRAMS

Master of Hospital Administration (MHA)

Admission is given on the basis of merit list prepared on the basis of marks secured in aggregate in their respective graduation programs. In addition, the short listed candidates will be called for a personal interview & interaction.

VOCATIONAL PROGRAMS

UNDER GRADUATE PROGRAMS

Bachelor of Vocation (B.Voc.) in Culinary Management

Admission is strictly based on the merit list prepared on the basis of marks secured in the qualifying examination.

Bachelor of Vocation (B.Voc.) in Software Development

Admission is strictly based on the merit list prepared on the basis of marks secured in 10+2 examination or as decided by the University, from time to time.

PARAMEDICAL PROGRAMS

POST GRADUATE PROGRAMS

Master of Physiotherapy (MPT)

Admission is given as per merit list prepared on the basis of marks secured in aggregate of all four years of Bachelor of Physiotherapy.

INTEGRATED I UNDERGRADUATE PROGRAMS

**Integrated Course (BPT + MPT)
Bachelor of Science (B.Sc.)Medical Technology -
Laboratory (BMLT) / Radiography & Imaging (BRIT) /
Radiotherapy (BRT) / Operation Theatre (BOT)
Bachelor of Science in Neurophysiology (BNP)
Bachelor of Optometry (B.Optom.) / Bachelor of
Physiotherapy (BPT)
Bachelor in Audiology and Speech Language Pathology
(BASLP)
Diploma in Dialysis Technology (DDT)**

The candidates are shortlisted on merit basis of the qualifying entrance examination. The merit list is displayed and shortlisted candidates are required to attend personal counselling session, to be eligible to get offer for admission to the program.

NURSING PROGRAMS

POST GRADUATE PROGRAMS

Master of Science (M.Sc.) Nursing

The candidates are shortlisted on merit basis of the qualifying examination. The merit list is displayed and shortlisted candidates are required to attend personal counselling session, to be eligible to get offer for admission to the program.

The counseling committee constituted by SRHU selects students on the basis of candidate's qualifying testimonials, credentials and fitness in medical examinations by Medical

Master of Science (M.Sc.) Nursing [Nurse Practitioner in Critical Care (NPCC)]

The candidates are shortlisted on basis of the qualifying examination and informed for schedule of entrance examination & interview. All successful candidates' merit list is deployed on website & University Notice Board rank-wise with schedule of counselling.

All successful candidates are required to attend personal counselling, before offer for admission to the program.

The counselling committee selects students on the basis of candidates' rank in entrance examination & interview, testimonials, credentials and medical examination.

UNDER GRADUATE PROGRAMS

Basic Bachelor of Science (B.Sc.) Nursing

The candidates are shortlisted on basis of the qualifying examination as per eligibility criteria prescribed by INC.

Candidates are informed for schedule of entrance examination. All successful candidates' merit list is uploaded on website & University Notice Board along with rank-wise schedule of counselling.

All successful candidates are required to attend personal counselling, to be eligible to get offer for admission to the program. The counselling committee selects students on the basis of candidates' rank in qualifying examination, testimonials, credentials and medical examination.

Post Basic Bachelor of Science (P.B.B.Sc.) Nursing

The candidates are shortlisted on merit basis of the qualifying examination. The merit list is displayed and shortlisted candidates are required to attend personal counselling session, to be eligible to get offer for admission to the program.

The personal counselling committee selects students on the basis of candidates' qualifying testimonials, credentials and medical examination.

CEENP ENTRANCE EXAMINATION PATTERN

- The Entrance Examination will comprise of an objective type test from Physics, Chemistry, Biology and English. (Physics, Chemistry, Mathematics and English for BASLP only)
- The language of the Question paper will be in English only
- The syllabus for the Entrance Examination will be as per the 10+2 Examination (CBSE / ISC / Uttarakhand Board or their equivalent)

DECLARATION OF RESULT

- The result will be displayed on the notice board of the University & will also be made available on University website www.srhu.edu.in

COUNSELLING AND ADMISSION

- The date for counselling/allotment of seats shall be intimated by the University to the eligible candidates, in the order of merit.
- The admission to the Nursing/Paramedical programs shall be made purely on the basis of merit obtained in CEENP (or merit list prepared on the basis of marks scored in the qualifying examination and personal interview (wherever applicable)).

FEE STRUCTURE

HIMALAYAN SCHOOL OF SCIENCE & TECHNOLOGY (HSST)

B.Tech. (Computer Science & Engg.) with IBM Badge (4 Years)

Fee Category	Category	2021
Tuition Fee (Per Semester)	AIC	Rs. 70,000/-
	PRU	Rs. 51,800/-
IBM Certificate / Badge Fee (Per Semester)	AIC & PRU Both	Rs. 15,625/-
Admission Fee (One Time)	AIC & PRU Both	Rs. 5,000/-
Security Deposit (Refundable on completion of program)	AIC & PRU Both	Rs. 10,000/-
Student Activity Fee (Per Semester)	AIC & PRU Both	Rs. 9,000/-
Examination Fee (Per University Exam)	AIC & PRU Both	Rs. 5,000/-
University Supplementary Exam Fee (Per Course)	AIC & PRU Both	Rs. 750/-
University Enrollment Fee (One Time)	AIC & PRU Both	Rs. 1,000/-
Convocation Fee (to be charged alongwith fee of 7 th semester)	AIC & PRU Both	Rs. 2,000/-
Alumni Fee (to be charged alongwith fee of 7 th semester)	AIC & PRU Both	Rs. 1,000/-
Hostel Fee (Per Year)*	AIC & PRU Both	Rs. 42,000/-
Mess Charges (Per Year)	As per actuals	

BCA (3 Years)

Fee Category	Category	2021
Tuition Fee (Per Semester)	AIC	Rs. 30,000/-
	PRU	Rs. 22,200/-
Admission Fee (One Time)	AIC & PRU Both	Rs. 5,000/-
Security Deposit (Refundable on completion of program)	AIC & PRU Both	Rs. 5,000/-
Student Activity Fee (Per semester)	AIC & PRU Both	Rs. 8,000/-
Examination fee (Per Semester)	AIC & PRU Both	Rs. 5,000/-
University Supplementary Exam fee (Per Course)	AIC & PRU Both	Rs. 750/-
University Enrollment Fee (One time)	AIC & PRU Both	Rs. 1,000/-
Convocation Fee (to be charged alongwith fee of 5 th semester)	AIC & PRU Both	Rs. 2,000/-
Alumni Fee (to be charged alongwith fee of 5 th semester)	AIC & PRU Both	Rs. 1,000/-
Hostel Fee (per year)*	AIC & PRU Both	Rs. 42,000/-
Mess charges (per year)	As per actuals	

MCA (2 Years)

Fee Category	Category	2021
Tuition Fee (Per Semester)	AIC	Rs. 35,000/-
	PRU	Rs. 25,900/-
Admission Fee (One Time)	AIC & PRU Both	Rs. 5,000/-
Security Deposit (Refundable on completion of program)	AIC	Rs. 5,000/-
Student Activity Fee (Per Semester)	AIC & PRU Both	Rs. 8,000/-
Examination Fee (Per University Exam)	AIC & PRU Both	Rs. 10,000/-
University Supplementary Exam fee (Per Course)	AIC & PRU Both	Rs. 750/-
University Enrollment Fee (One time)	AIC & PRU Both	Rs. 1,000/-
Convocation Fee (to be charged alongwith fee of 3 rd Semester)	AIC & PRU Both	Rs. 2,000/-
Alumni Fee (to be charged alongwith fee of 3 rd Semester)	AIC & PRU Both	Rs. 1,000/-
Hostel Fee (Per Year)*	AIC & PRU Both	Rs. 42,000/-
Mess charges (Per Year)	As per actuals	

Diploma in Engineering (3 Years at University Campus)

Fee Category	Category	2021
Tuition Fee (Per Semester)	AIC	Rs. 25,000/-
	PRU	Rs. 18,500/-
Admission Fee (One Time)	AIC & PRU Both	Rs. 5,000/-
Security Deposit (Refundable on completion of program)	AIC & PRU Both	Rs. 5,000/-
Student Activity Fee (Per Semester)	AIC & PRU Both	Rs. 8,000/-
Examination Fee (Per University Exam)	AIC & PRU Both	Rs. 3,500/-
University Supplementary Exam Fee (Per Course)	AIC & PRU Both	Rs. 750/-
University Enrollment Fee (One time)	AIC & PRU Both	Rs. 1,000/-
Administrative Charges (to be charged alongwith fee of 5 th semester)	AIC & PRU Both	Rs. 1,000/-
Alumni Fee (to be charged alongwith fee of final year)	AIC & PRU Both	Rs. 1,000/-
Hostel Fee (Per Year)*	AIC & PRU Both	Rs. 42,000/-
Mess charges (Per Year)	As per actuals	

Note: *Fee is subject to revision.

FEE STRUCTURE

HIMALAYAN SCHOOL OF SCIENCE & TECHNOLOGY (HSST)

B.Sc. (Hons.) in Data Science

Fee Category	Category	2021
Tuition Fee (Per Semester)	AIC	Rs. 30,000/-
	PRU	Rs. 22,200/-
Admission fee (one time)	AIC & PRU Both	Rs. 5,000/-
Security Deposit (Refundable on completion of program)	AIC & PRU Both	Rs. 10,000/-
Student Activity fee (Per semester)	AIC & PRU Both	Rs. 8,000/-
Examination fee (Per University Exam)	AIC & PRU Both	As decided by the University, from time to time
University Supplementary Exam Fee (per course)		
University Enrollment Fee (One time)	AIC & PRU Both	Rs. 1,000/-
Convocation Fee (to be charged alongwith fee of 3 rd semester)	AIC & PRU Both	Rs. 2,000/-
Alumni Fee (to be charged alongwith fee of 3 rd semester)	AIC & PRU Both	Rs. 1,000/-
Hostel Fee (per year)*	As decided by the University, from time to time	
Mess charges (per year)	As per actuals	

M.Sc. Statistics

Fee Category	Category	2021
Tuition Fee (Per Semester)	AIC	Rs. 40,000/-
	PRU	Rs. 29,600/-
Admission fee (one time)	AIC & PRU Both	Rs. 10,000/-
Security Deposit (Refundable on completion of program)	AIC & PRU Both	Rs. 10,000/-
Student Activity fee (Per semester)	AIC & PRU Both	Rs. 5,000/-
Examination fee (Per University Exam)	AIC & PRU Both	As decided by the University, from time to time
University Supplementary Exam Fee (per course)		
University Enrollment Fee (One time)	AIC & PRU Both	Rs. 1,000/-
Convocation Fee (to be charged alongwith fee of 3 rd semester)	AIC & PRU Both	Rs. 2,000/-
Alumni Fee (to be charged alongwith fee of 3 rd semester)	AIC & PRU Both	Rs. 1,000/-
Hostel Fee (per year)*	As decided by the University, from time to time	
Mess charges (per year)	As per actuals	

Note: *Fee is subject to revision.

FEE STRUCTURE

HIMALAYAN SCHOOL OF MANAGEMENT STUDIES (HSMS)

BBA (3 Years)

Fee Category	Category	2021
Tuition Fee (Per Semester)	AIC	Rs. 40,000/-
	PRU	Rs. 29,600/-
Certification in Logistics & SCM Fee (Per Semester)	AIC & PRU Both	Rs. 3,700/-
Admission Fee (One Time)	AIC & PRU Both	Rs. 5,000/-
Security Deposit (Refundable on completion of program)	AIC & PRU Both	Rs. 6,000/-
Student Activity Fee (Per Semester)	AIC & PRU Both	Rs. 9,000/-
Examination Fee (Per University Exam)	AIC & PRU Both	Rs. 5,000/-
University Supplementary Exam Fee (Per Course)	AIC & PRU Both	Rs. 750/-
University Enrollment Fee (One Time)	AIC & PRU Both	Rs. 1,000/-
Convocation Fee (to be charged alongwith fee of 5 th semester)	AIC & PRU Both	Rs. 2,000/-
Alumni Fee (to be charged alongwith fee of 5 th semester)	AIC & PRU Both	Rs. 1,000/-
Hostel Fee (Per Year)*	AIC & PRU Both	Rs. 42,000/-
Mess Charges (Per Year)	As per actuals	

B.Com (Hons.) (3 Years)

Fee Category	Category	2021
Tuition Fee (Per Semester)	AIC	Rs. 40,000/-
	PRU	Rs. 29,600/-
Certificate in Capital Markets (NSE) Fee (Per Semester)	AIC & PRU Both	Rs. 1,475/-
Admission Fee (One Time)	AIC & PRU Both	Rs. 5,000/-
Security Deposit (Refundable on completion of program)	AIC & PRU Both	Rs. 6,000/-
Student Activity Fee (Per Semester)	AIC & PRU Both	Rs. 9,000/-
Examination Fee (Per University Exam)	AIC & PRU Both	Rs. 5,000/-
University Supplementary Exam Fee (Per Course)	AIC & PRU Both	Rs. 750/-
University Enrollment Fee (One Time)	AIC & PRU Both	Rs. 1,000/-
Convocation Fee (to be charged alongwith fee of 5 th semester)	AIC & PRU Both	Rs. 2,000/-
Alumni Fee (to be charged alongwith fee of 5 th semester)	AIC & PRU Both	Rs. 1,000/-
Hostel Fee (Per Year)*	AIC & PRU Both	Rs. 42,000/-
Mess Charges (Per Year)	As per actuals	

MBA (2 Years)

Fee Category	Category	2021
Tuition Fee (Per Semester)	AIC	Rs. 75,000/-
	PRU	Rs. 55,500/-
Admission Fee (One Time)	AIC & PRU Both	Rs. 5,000/-
Security Deposit (Refundable on completion of program)	AIC & PRU Both	Rs. 6,000/-
Student Activity Fee (Per Semester)	AIC & PRU Both	Rs. 11,000/-
Examination Fee (Per University Exam)	AIC & PRU Both	Rs. 10,000/-
University Supplementary Exam fee (Per Course)	AIC & PRU Both	Rs. 750/-
University Enrollment Fee (One time)	AIC & PRU Both	Rs. 1,000/-
Convocation Fee (to be charged alongwith fee of 3 rd semester)	AIC & PRU Both	Rs. 2,000/-
Alumni Fee (to be charged alongwith fee of 3 rd semester)	AIC & PRU Both	Rs. 1,000/-
Hostel Fee (Per Annum)*	AIC & PRU Both	Rs. 42,000/-
Mess Charges (Per Year)	As per actuals	

MBA (2 Years)

[with Optional Add on Certification of "International Management" in Collaboration with DCAC Denmark]

Fee Category	Category	2021
Tuition Fee (Per Semester)	AIC	Rs. 75,000/-
	PRU	Rs. 55,500/-
Certification Fee (Per Semester)	AIC & PRU Both	Rs. 57,600/-
Admission fee (One Time)	AIC & PRU Both	Rs. 5,000/-
Security Deposit (Refundable on completion of program)	AIC & PRU Both	Rs. 6,000/-
Student Activity fee (Per Semester)	AIC & PRU Both	Rs. 11,000/-
Examination fee (Per Semester)	AIC & PRU Both	Rs. 10,000/-
University Supplementary Exam Fee (Per Course)	AIC & PRU Both	Rs. 750/-
University Enrollment Fee (One Time)	AIC & PRU Both	Rs. 1,000/-
Convocation Fee (to be charged alongwith fee of 3 rd semester)	AIC & PRU Both	Rs. 2,000/-
Alumni Fee (to be charged alongwith fee of 3 rd semester)	AIC & PRU Both	Rs. 1,000/-
Hostel Fee (Per Annum)*	AIC & PRU Both	Rs. 42,000/-
Mess charges (Per Year)	As per actuals	

Note: *Fee is subject to revision.

FEE STRUCTURE

HIMALAYAN INSTITUTE OF MEDICAL SCIENCE (HIMS)

M.Sc. Epidemiology (2 Years)

Fee Category	Category	2021
Tuition Fee (Per Semester)	AIC	Rs. 44,000/-
	PRU	Rs. 32,560/-
Admission Fee (One Time)	AIC & PRU Both	Rs. 10,000/-
Security Deposit (Refundable on completion of program)	AIC & PRU Both	Rs. 10,000/-
Examination Fee (Per University Exam)	AIC & PRU Both	Rs. 10,000/-
University Supplementary Exam Fee (Per Course)	AIC & PRU Both	Rs. 750/-
University Enrollment Fee (One Time)	AIC & PRU Both	Rs. 1,000/-
Student Activity Fee (Per Semester)	AIC & PRU Both	Rs. 4,500/-
Convocation Fee (to be charged alongwith fee of final year)	AIC & PRU Both	Rs. 2,000/-
Alumni Fee (to be charged alongwith fee of final year)	AIC & PRU Both	Rs. 1,000/-
Vaccination Charges	AIC & PRU Both	Rs. 1,500/-
Hostel Fee (Per Year)*	AIC & PRU Both	Rs. 42,000/-
Mess Charges (Per Year)	As per actuals	

M.Sc. Clinical Research (2 Years)

Fee Category	Category	2021
Tuition Fee (Per Semester)	AIC	Rs. 44,000/-
	PRU	Rs. 32,560/-
Admission Fee (One Time)	AIC & PRU Both	Rs. 10,000/-
Security Deposit (Refundable on completion of program)	AIC & PRU Both	Rs. 10,000/-
Examination Fee (Per University Exam)	AIC & PRU Both	Rs. 10,000/-
University Supplementary Exam Fee (Per Course)	AIC & PRU Both	Rs. 750/-
University Enrollment Fee (One Time)	AIC & PRU Both	Rs. 1,000/-
Student Activity Fee (Per Semester)	AIC & PRU Both	Rs. 4,500/-
Convocation Fee (to be charged alongwith fee of final year)	AIC & PRU Both	Rs. 2,000/-
Alumni Fee (to be charged alongwith fee of final year)	AIC & PRU Both	Rs. 1,000/-
Vaccination Charges	AIC & PRU Both	Rs. 1,500/-
Hostel Fee (Per Year)*	AIC & PRU Both	Rs. 42,000/-
Mess Charges (Per Year)	As per actuals	

Note: *Fee is subject to revision.

Certificate Programme - Applied Nutrition & Dietetics / Epidemiology & Biostatistics (6 Months)

Fee Category	Category	2021
Tuition Fee (For Six Months)	AIC & PRU Both	Rs. 12,000/-
Admission Fee (One Time)	AIC & PRU Both	Rs. 5,000/-
Examination Fee (Per University Exam)	AIC & PRU Both	Rs. 1,500/-
University Supplementary Exam Fee (Per Course)	AIC & PRU Both	Rs. 500/-
University Enrollment Fee (One Time)	AIC & PRU Both	Rs. 1,000/-
Alumni Fee (to be charged at the time of admission)	AIC & PRU Both	Rs. 1,000/-

Fellowship Programmes - Neonatology / Critical Care Medicine / Medical Oncology / Surgical Oncology

Fee Category	Category	2021
Tuition Fee (Per Annum)	AIC & PRU Both	Rs. 1,00,000/-
Admission Fee (One Time)	AIC & PRU Both	Rs. 1,00,000/-
Security Deposit (Refundable on completion of program)	AIC & PRU Both	Rs. 1,00,000/-
Examination Fee	AIC & PRU Both	Rs. 25,000/-
University Enrollment Fee (One Time)	AIC & PRU Both	Rs. 1,000/-
Hostel Fee (Unmarried Candidates) Per Annum	AIC & PRU Both	Rs. 1,80,000/-
Hostel Fee (Married Candidates) Per Annum	AIC & PRU Both	Rs. 2,10,000/-
Alumni Fee (to be charged at the time of admission)	AIC & PRU Both	Rs. 1,000/-
Vaccination Charges	AIC & PRU Both	Rs. 1,500/-
Mess Charges	As per actuals	
Stipend amounting to Rs. 90,000/- (Rupees ninety thousand only) per month shall be paid to the candidates of Fellowship Programmes		

Note: *Fee is subject to revision.

FEE STRUCTURE

HIMALAYAN INSTITUTE OF MEDICAL SCIENCE (HIMS)

MBBS

Fee Category	2021
Tuition Fee (Per Annum)	Rs. 1,800,000/-
Admission fee (One Time) Non-Refundable	Rs. 100,000/-
Security Deposit (Refundable on completion of program)	Rs. 200,000/-
Hostel Fees - Non AC (Twin Sharing) Per Annum	Rs. 90,000/-
Hostel Fees - AC (Twin Sharing) Per Annum	Rs. 120,000/-
University Enrollment Fee (One time)	Rs. 1,000/-
Hepatitis - B Vaccination (One Time)	Rs. 1,500/-
Dress Material (One Time)	Rs. 10,000/-
University Exam Fee	As per University rules as and when required
Mess Charges	As per actuals

MD/MS

Fee Category	2021
Branch	Tuition Fee p.a.
MD-Anatomy	Rs. 300,000/-
MD-Physiology	Rs. 300,000/-
MD-Bio Chemistry	Rs. 400,000/-
MD-Microbiology	Rs. 400,000/-
MD-Pharmacology	Rs. 400,000/-
MD-Community Medicine	Rs. 400,000/-
Pathology-MD	Rs. 1,000,000/-
Emergency Medicine	Rs. 1,400,000/-
MD-Radiation Oncology	Rs. 1,400,000/-
MD-Anaesthesiology	Rs. 1,400,000/-
MS-Otorhinolaryngology (ENT)	Rs. 1,400,000/-
MD-Psychiatry	Rs. 1,600,000/-
MD-Pulmonary Medicine (TB Chest)	Rs. 1,600,000/-
General Surgery-MS	Rs. 2,000,000/-
MS-Ophthalmology	Rs. 2,200,000/-
MD-Dermatology (Skin)	Rs. 2,200,000/-
MD-General Medicine	Rs. 2,200,000/-
MD-Paediatrics	Rs. 2,200,000/-
MS-Orthopaedic	Rs. 2,500,000/-
MS-Obst. Gynae	Rs. 2,500,000/-
MD-Radio Diagnosis	Rs. 2,500,000/-

Other Fee

Admission Fee Non-Refundable (One Time)	Rs. 100,000/-
Security Deposit Refundable (One Time)	Rs. 500,000/-
Hostel (Boys & Girls) Per Annum	Rs. 180,000/-
Hostel (Married) Per Annum	Rs. 210,000/-
University Enrollment Fee (One time)	Rs. 1,000/-
Hepatitis - B Vaccination (One Time)	Rs. 1,500/-
University Examination Fee	Rs. 40,000/-
Mess Charges	As per actuals

FEE STRUCTURE

DEPARTMENT OF PARAMEDICAL SCIENCES

BMLT, BRIT, BRT, BOT, B.OPTOM & BASLP (3 years)

Fee Category	Category	2021
Tuition Fee (Per Year)	AIC	Rs. 70,000/-
	PRU	Rs. 51,800/-
Admission Fee (One Time)	AIC & PRU Both	Rs. 10,000/-
Security Fee (Refundable on completion of program)	AIC & PRU Both	Rs. 10,000/-
Examination Fee (Per University Exam)	AIC & PRU Both	Rs. 5,000/-
University Supplementary Exam Fee (Per Course)	AIC & PRU Both	Rs. 750/-
University Enrollment Fee (One Time)	AIC & PRU Both	Rs. 1,000/-
Student Activity Fee (Per Year)	AIC & PRU Both	Rs. 10,000/-
Convocation Fee (to be charged alongwith fee of final year)	AIC & PRU Both	Rs. 2,000/-
Alumni Fee (to be charged alongwith fee of final year)	AIC & PRU Both	Rs. 1,000/-
Vaccination Charges (one time)	AIC & PRU Both	Rs. 1,500/-
Hostel Fee (Per Year)*	AIC & PRU Both	Rs. 42,000/-
Mess Fee (Per Year)	As per Actuals	

BPT (4 years)

Fee Category	Category	2021
Tuition Fee (Per Year)	AIC	Rs. 70,000/-
	PRU	Rs. 51,800/-
Admission Fee (One Time)	AIC & PRU Both	Rs. 10,000/-
Security Fee (Refundable on completion of program)	AIC & PRU Both	Rs. 10,000/-
Examination Fee (Per University Exam)	AIC & PRU Both	Rs. 5,000/-
University Supplementary Exam Fee (Per Course)	AIC & PRU Both	Rs. 750/-
University Enrollment Fee (One Time)	AIC & PRU Both	Rs. 1,000/-
Student Activity Fee (Per Year)	AIC & PRU Both	Rs. 10,000/-
Convocation Fee (to be charged alongwith fee of final year)	AIC & PRU Both	Rs. 2,000/-
Alumni Fee (to be charged alongwith fee of final year)	AIC & PRU Both	Rs. 1,000/-
Vaccination Charges (One Time)	AIC & PRU Both	Rs. 1,500/-
Hostel Fee (Per Year)*	AIC & PRU Both	Rs. 42,000/-
Mess Fee (Per Year)	As per Actuals	

MPT (2 Years)

Fee Category	Category	2021
Tuition Fee (Per Year)	AIC	Rs. 1,40,000/-
	PRU	Rs. 1,03,600/-
Admission Fee (One Time)	AIC & PRU Both	Rs. 10,000/-
Security Fee (Refundable on completion of program)	AIC & PRU Both	Rs. 10,000/-
Examination Fee (Per Year)	AIC & PRU Both	Rs. 10,000/-
University Supplementary Exam Fee (Per Course)	AIC & PRU Both	Rs. 2,500/-
University Enrollment Fee (One Time)	AIC & PRU Both	Rs. 1,000/-
Student Activity Fee (Per Year)	AIC & PRU Both	Rs. 10,000/-
Convocation Fee (to be charged alongwith fee of final year)	AIC & PRU Both	Rs. 2,000/-
Alumni Fee (to be charged alongwith fee of final year)	AIC & PRU Both	Rs. 1,000/-
Vaccination Charges (One Time)	AIC & PRU Both	Rs. 1,500/-
Hostel Fee (Per Year)*	AIC & PRU Both	Rs. 42,000/-
Mess Fee (Per Year)	As per Actuals	

DDT (1 Year)

Fee Category	Category	2021
Tuition Fee (Per Year)	AIC	Rs. 30,000/-
	PRU	Rs. 22,200/-
Admission Fee (One Time)	AIC & PRU Both	Rs. 10,000/-
Security Fee (Refundable on completion of program)	AIC & PRU Both	Rs. 10,000/-
Examination Fee (Per University Exam)	AIC & PRU Both	Rs. 3,000/-
University Supplementary Exam Fee (Per Course)	AIC & PRU Both	Rs. 750/-
University Enrollment Fee (One Time)	AIC & PRU Both	Rs. 1,000/-
Student Activity Fee (Per Year)	AIC & PRU Both	Rs. 10,000/-
Administrative Charges (to be charged at the time of admission)	AIC & PRU Both	Rs. 1,000/-
Alumni Fee (to be charged at the time of admission)	AIC & PRU Both	Rs. 1,000/-
Vaccination Charges (One Time)	AIC & PRU Both	Rs. 1,500/-
Hostel Fee (Per Annum)*	AIC & PRU Both	Rs. 42,000/-
Mess Fee (Per Year)	As per Actuals	

Note: *Fee is subject to revision.

FEE STRUCTURE

DEPARTMENT OF PARAMEDICAL SCIENCES

INTEGRATED PROGRAMME (BPT-MPT) IN PHYSIOTHERAPY (6 YEARS)

(Paramedical Integrated Programme Leading to Award of Masters Degree in Physiotherapy (6 years))

Fee Components	First Year	Second Year	Third Year	Fourth Year	Fifth Year	Sixth Year
Tuition Fee*	Rs. 72000/-	Rs. 79000/-	Rs. 87000/-	Rs. 96000/-	Rs. 106000/-	Rs. 117000/-
Admission Fee (One Time)	Rs. 10,000/-					
Security Fee (Refundable on completion of program)	Rs. 10,000/-					
Examination Fee (Per University Exam)	Rs. 5,000/-					
University Supplementary Exam Fee (Per Course)	Rs. 750/-	Rs. 750/-	Rs. 750/-	Rs. 750/-	Rs. 2,500/-	Rs. 2,500/-
University Enrollment Fee (One Time)	Rs. 1,000/-					
Student Activity Fee (Per Year)	Rs. 10,000/-					
Convocation Fee (to be charged alongwith fee of final year)	–	–	–	–	–	Rs. 2,000/-
Alumni Fee (to be charged alongwith fee of final year)	–	–	–	–	–	Rs. 1,000/-
Vaccination Charges (One Time)	Rs. 1,500/-					
Hostel Fee (Per Year)**	Rs. 42,000/-					
Mess Fee (Per Year)	As per Actuals					

Note: *26% rebate in tuition fee shall be given to the Permanent Residents of Uttarakhand against the 40% seats reserved for the Permanent Residents of the State.
 ** Fee is subject to revision

FEE STRUCTURE
DEPARTMENT OF
PARAMEDICAL SCIENCES

M.OPTOM (2 years)

Fee Category	Category	2021
Tuition Fee (Per Year)	AIC	Rs. 1,40,000/-
	PRU	Rs. 1,03,600/-
Admission Fee (One Time)	AIC & PRU Both	Rs. 10,000/-
Security Fee (Refundable on completion of program)	AIC & PRU Both	Rs. 10,000/-
Examination Fee (Per University Exam)	AIC & PRU Both	Rs. 10,000/-
University Supplementary Exam Fee (Per Course)	AIC & PRU Both	Rs. 2,500/-
University Enrollment Fee (One Time)	AIC & PRU Both	Rs. 1,000/-
Student Activity Fee (Per Year)	AIC & PRU Both	Rs. 10,000/-
Convocation Fee (to be charged alongwith fee of final year)	AIC & PRU Both	Rs. 2,000/-
Alumni Fee (to be charged alongwith fee of final year)	AIC & PRU Both	Rs. 1,000/-
Vaccination Charges - Hepatitis B (One Time)	AIC & PRU Both	Rs. 1,500/-
Hostel Fee (Per Year)*	AIC & PRU Both	Rs. 42,000/-
Mess Fee	As per Actuals	

Note: *Fee is subject to revision.

FEE STRUCTURE
DEPARTMENT OF
BIO SCIENCES

B.Sc. Hons. Microbiology & B.Sc. Hons. Biotechnology (3 Years)

Fee Category	Category	2021
Tuition Fee (Per Semester)	AIC	Rs. 35,000/-
	PRU	Rs. 26,000/-
Admission Fee (One Time)	AIC & PRU Both	Rs. 10000/-
Security Deposit (Refundable on completion of program)	AIC & PRU Both	Rs. 10,000/-
Examination Fee (Per University Exam)	AIC & PRU Both	Rs. 5,000/-
University Supplementary Exam Fee (Per Course)	AIC & PRU Both	Rs. 750/-
University Enrollment Fee (One Time)	AIC & PRU Both	Rs. 1,000/-
Student Activity Fee (Per Semester)	AIC & PRU Both	Rs. 3,000/-
Convocation Fee (to be charged alongwith fee of final year)	AIC & PRU Both	Rs. 2,000/-
Alumni Fee (to be charged alongwith fee of final year)	AIC & PRU Both	Rs. 1,000/-
Vaccination Charges	AIC & PRU Both	Rs. 1,500/-
Hostel Fee Per Year*	AIC & PRU Both	Rs. 42,000/-
Mess Charges (Per Year)	As per actuals	

M.Sc. Microbiology/ Biotechnology/ Biochemistry (2 Years)

Fee Category	Category	2021
Tuition Fee (Per Semester)	AIC	Rs. 44,000/-
	PRU	Rs. 32,560/-
Admission Fee (One Time)	AIC & PRU Both	Rs. 10,000/-
Security Deposit (Refundable on completion of program)	AIC & PRU Both	Rs. 10,000/-
Examination Fee (Per Semester)	AIC & PRU Both	Rs. 10,000/-
University Supplementary Exam Fee (Per Course)	AIC & PRU Both	Rs. 750/-
University Enrollment Fee (One Time)	AIC & PRU Both	Rs. 1,000/-
Student Activity Fee (Per Semester)	AIC & PRU Both	Rs. 3,000/-
Convocation Fee (to be charged alongwith fee of final year)	AIC & PRU Both	Rs. 2,000/-
Alumni Fee (to be charged alongwith fee of final year)	AIC & PRU Both	Rs. 1,000/-
Vaccination Charges	AIC & PRU Both	Rs. 1,500/-
Hostel Fee Per Year*	AIC & PRU Both	Rs. 42,000/-
Mess Charges (Per Year)	As per actuals	

Note: *Fee is subject to revision.

FEE STRUCTURE

DEPARTMENT OF

YOGA SCIENCE & HOLISTIC HEALTH

B.Sc. Yoga Science & Holistic Health (3 years)

Fee Category	Category	2021
Tuition Fee (Per Semester)	AIC	Rs. 20,000/-
	PRU	Rs. 14,800/-
Admission Fee (One Time)	AIC & PRU Both	Rs. 5,000/-
Security Deposit (Refundable on completion of program)	AIC & PRU Both	Rs. 5,000/-
Examination Fee (Per University Exam)	AIC & PRU Both	Rs. 2,500/-
University Supplementary Exam Fee (Per Course)	AIC & PRU Both	Rs. 750/-
University Enrollment Fee (One Time)	AIC & PRU Both	Rs. 1,000/-
Student Activity Fee (Per Semester)	AIC & PRU Both	Rs. 3,000/-
Convocation Fee (to be charged alongwith fee of final year)	AIC & PRU Both	Rs. 2,000/-
Alumni Fee (to be charged alongwith fee of final year)	AIC & PRU Both	Rs. 1,000/-
Hostel Fee (Per Year)*	AIC & PRU Both	Rs. 42,000/-
Mess Charges (Per Year)	As per actuals	

Note: *Fee is subject to revision.

FEE STRUCTURE

DEPARTMENT OF

HOSPITAL ADMINISTRATION

MHA (2 Years)

Fee Category	Category	2021
Tuition Fee (Per Semester)	AIC	Rs. 35,000/-
	PRU	Rs. 25,900/-
Admission Fee (One Time)	AIC & PRU Both	Rs. 20,000/-
Security Fee (Refundable on completion of program)	AIC & PRU Both	Rs. 15,000/-
Examination Fee (Per University Exam)	AIC & PRU Both	Rs. 10,000/-
University Supplementary Exam Fee (Per Course)	AIC & PRU Both	Rs. 2,500/-
University Enrollment Fee (One Time)	AIC & PRU Both	Rs. 1,000/-
Student Activity Fee (Per Semester)	AIC & PRU Both	Rs. 7,000/-
Convocation Fee (to be charged alongwith fee of final year)	AIC & PRU Both	Rs. 2,000/-
Alumni Fee (to be charged alongwith fee of final year)	AIC & PRU Both	Rs. 1,000/-
Vaccination Charges (one time)	AIC & PRU Both	Rs. 1,500/-
Hostel Fee (Per Year)*	AIC & PRU Both	Rs. 42,000/-
Mess Fee (Per Year)	As per Actuals	

Note: *Fee is subject to revision.

FEE STRUCTURE

HIMALAYAN COLLEGE OF NURSING

B.Sc. Nursing (4 Years)

Fee Category	Category	2021
Tuition Fee (Per Year)	AIC	Rs. 1,50,000/-
	PRU	Rs. 1,11,000/-
Admission Fee (One Time)	AIC & PRU Both	Rs. 20,000/-
Security Fee (Refundable on completion of program)	AIC & PRU Both	Rs. 20,000/-
Examination Fee (Per Year)	AIC & PRU Both	Rs. 5,000/-
University Supplementary Exam Fee (Per Course)	AIC & PRU Both	Rs. 750/-
University Enrollment Fee (One Time)	AIC & PRU Both	Rs. 1,000/-
Student Activity Fee (Per Year)	AIC & PRU Both	Rs. 10,000/-
Convocation Fee (to be charged alongwith fee of final year)	AIC & PRU Both	Rs. 2,000/-
Alumni Fee (to be charged alongwith fee of final year)	AIC & PRU Both	Rs. 1,000/-
Vaccination Charges (One Time)	AIC & PRU Both	Rs. 1,500/-
Hostel Fee (Per Year)*	AIC & PRU Both	Rs. 30,000/-
Mess Charges	As per actuals	

Post Basic B.Sc. Nursing (2 Years)

Fee Category	Category	2021
Tuition Fee (Per Year)	AIC	Rs. 85,000/-
	PRU	Rs. 62,900/-
Admission Fee (One Time)	AIC & PRU Both	Rs. 20,000/-
Security Fee (Refundable on completion of program)	AIC & PRU Both	Rs. 20,000/-
Examination Fee (Per Year)	AIC & PRU Both	Rs. 5,000/-
University Supplementary Exam Fee (Per Course)	AIC & PRU Both	Rs. 750/-
University Enrollment Fee (One time)	AIC & PRU Both	Rs. 1,000/-
Student Activity Fee (Per Year)	AIC & PRU Both	Rs. 10,000/-
Convocation Fee (to be charged alongwith fee of final year)	AIC & PRU Both	Rs. 2,000/-
Alumni Fee (to be charged alongwith fee of final year)	AIC & PRU Both	Rs. 1,000/-
Hostel Fee (Per year)*	AIC & PRU Both	Rs. 30,000/-
Mess Charges	As per actuals	

Note: *Fee is subject to revision.

M.Sc. Nursing (2 Years)

Fee Category	Category	2021
Tuition Fee (Per Year)	AIC	Rs. 1,80,000/-
	PRU	Rs. 1,33,200/-
Admission Fee (One Time)	AIC & PRU Both	Rs. 20,000/-
Security Fee (Refundable on completion of program)	AIC & PRU Both	Rs. 20,000/-
Examination Fee (Per Year)	AIC & PRU Both	Rs. 7,500/-
University Supplementary Exam Fee (Per Course)	AIC & PRU Both	Rs. 750/-
University Enrollment Fee (One Time)	AIC & PRU Both	Rs. 1,000/-
Student Activity Fee (Per Year)	AIC & PRU Both	Rs. 10,000/-
Convocation Fee (to be charged alongwith fee of final year)	AIC & PRU Both	Rs. 2,000/-
Alumni Fee (to be charged alongwith fee of final year)	AIC & PRU Both	Rs. 1,000/-
Hostel Fee (Per year)*	AIC & PRU Both	Rs. 30,000/-
Mess Charges	As per actuals	

M.Sc. Nursing (Nurse Practitioner in Critical Care) (2 Years)

Fee Category	Category	2021
Tuition Fee (Per Year)	AIC	Rs. 1,80,000/-
	PRU	Rs. 1,33,200/-
Admission Fee (One Time)	AIC & PRU Both	Rs. 20,000/-
Security Fee (Refundable on completion of program)	AIC & PRU Both	Rs. 20,000/-
Examination Fee (Per Year)	AIC & PRU Both	Rs. 7,500/-
University Supplementary Exam Fee (Per Course)	AIC & PRU Both	Rs. 750/-
University Enrollment Fee (One time)	AIC & PRU Both	Rs. 1,000/-
Student Activity Fee (Per Year)	AIC & PRU Both	Rs. 10,000/-
Convocation Fee (to be charged alongwith fee of final year)	AIC & PRU Both	Rs. 2,000/-
Alumni Fee (to be charged alongwith fee of final year)	AIC & PRU Both	Rs. 1,000/-
Hostel Fee (Per year)*	AIC & PRU Both	Rs. 30,000/-
Mess Charges	As per actuals	

Note: *Fee is subject to revision.

FEE STRUCTURE

HIMALAYAN SCHOOL OF VOCATIONAL STUDIES & SKILL DEVELOPMENT

Permanent Resident of Uttarakhand

B.Voc-Culinary Management

Fee Category	Sem 1	Sem 2	Sem 3	Sem 4	Sem 5	Sem 6	Total
Admission Fee	Rs. 5000 (one time)						Rs. 5,000
Tuition Fee	Rs. 27750	Rs. 27750	Rs. 27750	Rs. 27750	Rs. 27750	Rs. 27750	Rs. 166500
University Enrolment Fee	Rs. 1,000						Rs. 1,000
Uniform & Dress Material Fee	Rs. 3,000		Rs. 3,000		Rs. 3,000		Rs. 9,000
University Assessment Fee	Rs. 3,000	Rs. 3,000	Rs. 3,000	Rs. 3,000	Rs. 3,000	Rs. 3,000	Rs. 18,000
SSC Assessment & Certification	Rs. 1,000	Rs. 1,000		Rs. 1,000		Rs. 1,000	Rs. 4,000
Educational Material Fee	Rs. 2,000	Rs. 2,000	Rs. 2,000	Rs. 1,000	Rs. 2,000	Rs. 1,000	Rs. 10,000
Security Deposit	Rs. 5,000 (Refundable on completion of program)						Rs. 5,000
Student Activity Fee	Rs. 1,500	Rs. 1,500	Rs. 1,500	Rs. 1,500	Rs. 1,500	Rs. 1,500	Rs. 9,000
Total	Rs. 49,250	Rs. 35,250	Rs. 37,250	Rs. 34,250	Rs. 37,250	Rs. 34,250	Rs. 2,27,500

All India Category

B.Voc-Culinary Management

Fee Category	Sem 1	Sem 2	Sem 3	Sem 4	Sem 5	Sem 6	Total
Admission Fee	Rs. 5,000 (one time)						Rs. 5,000
Tuition Fee	Rs. 37,500	Rs. 37,500	Rs. 37,500	Rs. 37,500	Rs. 37,500	Rs. 37,500	Rs. 2,25,000
University Enrolment Fee	Rs. 1,000						Rs. 1,000
Uniform & Dress Material Fee	Rs. 3,000		Rs. 3,000		Rs. 3,000		Rs. 9,000
University Assessment Fee	Rs. 3,000	Rs. 3,000	Rs. 3,000	Rs. 3,000	Rs. 3,000	Rs. 3,000	Rs. 18,000
SSC Assessment & Certification	Rs. 1,000	Rs. 1,000		Rs. 1,000		Rs. 1,000	Rs. 4,000
Educational Material Fee	Rs. 2,000	Rs. 2,000	Rs. 2,000	Rs. 1,000	Rs. 2,000	Rs. 1,000	Rs. 10,000
Security Deposit	Rs. 5,000 (Refundable on completion of program)						Rs. 5,000
Student Activity Fee	Rs. 1,500	Rs. 1,500	Rs. 1,500	Rs. 1,500	Rs. 1,500	Rs. 1,500	Rs. 9,000
Total	Rs. 59,000	Rs. 45,000	Rs. 47,000	Rs. 44,000	Rs. 47,000	Rs. 44,000	Rs. 2,86,000

Note : In addition, the following charges/fee shall be applicable:
1. University Exam Fee amounting to Rs. 5,000/- per University exam will be charged
2. University Supplementary Exam Fee amounting to Rs. 750/- per course will be charged
3. Convocation Fee amounting to Rs. 2,000/- will be charged alongwith the fee of 5th semester
4. Alumni Fee amounting to Rs. 1,000/- will be charged alongwith the fee of 5th semester

FEE STRUCTURE

HIMALAYAN SCHOOL OF VOCATIONAL STUDIES & SKILL DEVELOPMENT

B.Voc. in Software Development

Fee Category	Category	2021
Tuition Fee (Per Semester)	AIC	Rs. 25,000/-
	PRU	Rs. 18,500/-
Admission fee (one time)	AIC & PRU Both	Rs. 5,000/-
Security Deposit (Refundable on completion of program)	AIC & PRU Both	Rs. 10,000/-
Student Activity fee (Per semester)	AIC & PRU Both	Rs. 8,000/-
Examination fee (Per University Exam)	AIC & PRU Both	As decided by the University, from time to time
University Supplementary Exam Fee (per course)		
University Enrollment Fee (One time)	AIC & PRU Both	Rs. 1,000/-
Convocation Fee (to be charged alongwith fee of 3 rd semester)	AIC & PRU Both	Rs. 2,000/-
Alumni Fee (to be charged alongwith fee of 3 rd semester)	AIC & PRU Both	Rs. 1,000/-
SSC Certification & Assessment fees	AIC & PRU Both	As per IT-ITes SSC NASSCOM based on NSQF levels
Hostel Fee (per year)*	As decided by the University, from time to time	
Mess charges (per year)	As per actuals	

Note: *Fee is subject to revision.

CAMPUS LIFE

STUDENT CO-CURRICULAR & EXTRA-CURRICULAR ACTIVITIES

Students have ample opportunities to develop & exhibit talent, gain from their own learnings and complement their academic pursuits.

FOUNDATION DAY

Foundation Day, an intersection among arts and popular culture, spread over 2-3 days is full of diversified and balanced set of activities. It is a time of overflowing enthusiasm brought about by an amalgamation of art and activities with a view to explore the wealth of artistic and creative talent of students.

Students showcase their talent as singers, dancers, actors, poets, etc. The winners are declared in each category at the close of the event. Students are also honored with academic and sports awards for outstanding performance.



MAHASAMADHI DIWAS

Each year, 13th November is observed as "Mahasamadhi Day" in remembrance of our Founder and Guide, His Holiness Dr. Swami Rama. Worldwide tribute flow-in for the Master who worked tirelessly for improving the lives of people, living in the remotest of the areas, by providing healthcare and education.

This day the University recognizes and honors an organization who has dedicated themselves in service of humanity with "Swami Rama Humanitarian Award", SRHU faculty & staff for extraordinary contributions to the organization with "Best Employee Award" followed by Bhandara (food offering) served by the students of SRHU to approximately 8000 including people from nearby villages.



ENTHUSIA AT SRHU CAMPUS

Students of Management School and Engineering & Technology School organized an interschool football and volleyball tournament at our campus.

DSB, Rishikesh were the winners of football tournament where Mother Miracle School, Rishikesh won the volleyball tournament.

PYREXIA AT AIIMS, RISHIKESH

42 out of 105 participating students from Medical College won medals & awards in a medical intercollege event of north India encompassing athletics, various sports, cultural and literary activities. Ms. Priyanka was declared the "Best Athlete – Female".

WILDLIFE AT SRHU CAMPUS

In collaboration with Wildlife Preservation Society and Dehradun Zoo, SRHU Literary Committee organized a Wildlife Photography Competition. Ujjwal Rastogi from Himalayan School of Management Studies (HSMS) won the competition. Runner-up, Gaurav Krishali and shared third prize winners Vikas Sharma & Praval Rawat were from Himalayan School of Science & Technology (HSST).

Celebrating Doctors Day, Engineers Day, etc. and conducting Awareness Campaigns around Cleanliness, Casting votes, AIDS, Tuberculosis, Substance abuse etc. are a regular feature of college life.

Besides, awareness programs on Capital Market, Nukkad Natak (Street Play) on Gender Sensitization, Hindi Diwas, etc. are some of the recent activities / events.



FACILITIES & AMENITIES

Our campus is safe, secure, well illuminated and comfortable. Available facilities provide convenience & comfort and facilitate successful academic & social life for students.



HOSTELS & RESIDENCES

Accommodation is next best to home. Enhance your personal abilities, live together, live independently and enrich understanding of various facets of life journey through analytical, philosophical discussions etc.

CANTEEN & CAFÉ'

Healthy and hygienically prepared food is served at the in-house canteens where students can enjoy homelike food besides indulging at the in-campus Cafeteria

UTILITY CENTER

All provisions are under one roof. Meet daily essentials with in-campus access to grocery store, stationery & gift shop, laundry, tailoring shop, ATM, gymnasium, cafeteria, etc.

PARKS & GARDENS

Sit in the shade and look upon verdure. The green spaces at our campus are home to variety & rare species of birds. Interact with nature, breathe clean & fresh air, boost mental health and bond with other students & faculty.

FIND OUT MORE

AWARDS & RECOGNITION

To create a culture of mutual respect, we recognize and honor students, individuals and organizations for exemplary achievements and significant contributions.

SWAMI RAMA HUMANITARIAN AWARD

Since 2003, every year, an award dedicated to H.H. Shri Swami Rama, is given in recognition of the work of an individual / institution for economic, environmental, scientific, social & spiritual growth of the world. The award consists of Rupees Five Lacs, a Gold Medal and a Citation.

ACADEMIC AWARDS

Dr. Swami Rama Best Graduate of the Year Award

Awarded to student scoring highest marks in each year of the selected program besides meritorious achievements in extra-curricular activities.

Dr. P. Upadhyaya Gold Medal

Given to a student out of the top 15 MBBS students of the University excelling in academics including extra-curricular activities.

Ms. Ritu R.P. Agarwal Gold Medal

Awarded to student who has scored 1st rank in order of merit, in all the MBBS Professional University examinations.

Best Thesis Award

Awarded to the student who has submitted the best Thesis in MD / MS.

Prof. Dr. K.J.B.S Gaur Memorial Gold Medal

Presented to the MBBS student with the highest score in General Medicine.

Swami Rama Combined Therapy Award

Presented to a student/faculty who excels in promoting integration of Yoga Science into main stream of Medical Science.

Dhruv Sood Medal

Granted to the Best Sportsman of the Year in MBBS.

Dr. K.G. Mittal Gold Medal

Presented to student scoring 1st rank in order of merit, in the MBBS First Professional University examination.

Smt. Kamalamma & Shri Ramachandra Iyer Certificate and Cash Award

Given to the 'Topper' in Pharmacology of MBBS second Professional University examination.

Gold Medal for highest marks in Anatomy with Distinction

Awarded to student who has scored highest marks in Anatomy, with distinction, in the MBBS First Professional University examinations.



CONVOCATIONS

Our University celebrates the graduation ceremony with much fanfare and awards degrees to students and honorary graduates.



THE FIRST CONVOCATION

Chief Guest - The Hon'ble Ex. President of India, Dr. Pranab Mukherjee
288 Students were conferred Post Graduate and Graduate Degrees.



SECOND CONVOCATION

Chief Guest - The Hon'ble Vice-President of India, Shri. M. Venkaiah Naidu
802 Students were conferred, Ph.D, Post Graduate and Graduate Degrees.

THIRD CONVOCATION

Chief Guest- Hon'ble Governor of Uttarakhand, Smt. Baby Rani Maurya
618 students were conferred, Post Graduate and Graduate degrees.



FOURTH CONVOCATION

Chief Guest - Hon'ble HRD Minister, Dr. Ramesh Pokhriyal Nishank
674 Students were conferred, Post Graduate and Graduate Degrees.



GENERAL INFORMATION

ORIENTATION

We welcome our students through orientation programs organized by the respective academic units. All new students are invited along with their parents. During this program, both students and parents learn about the core values and the framework in which university operates including available resources and facilities etc.



YOGA & HEALTH

Our campus is home to the unique 'Science of Joyful Living' workshops based on the teaching of H.H. Dr. Swami Rama. These workshops are an endeavor to establish the concept of healthy mind & body in individuals and help unlock the hidden potentials, making us more joyful, creative, and dynamic.

GRIEVANCE REDRESSAL

The University has a grievance redressal cell that takes care of 'grievances' of the students related to academics, administrative, examinations, etc.



MEDICAL FACILITY

We have a super specialty hospital (Himalayan Hospital) within the campus for students to have easy, quick access to specialized healthcare facilities and emergencies, 24*7.



ANTI-RAGGING

National Anti-ragging
Helpline – 1800 180 5522
email – helpline@antiragging.in



The campus of the university is ragging free. All students are requested to note and co-operate in keeping the University and its constituent colleges free from ragging.



CAMPUS RULES

Students are expected to comply with University rules and regulations.